

Product datasheet for **TA384408M**

HIF-1 alpha (HIF1A) Rabbit Polyclonal Antibody

Product data:

Product Type:	Primary Antibodies
Applications:	ELISA, IF, IHC, WB
Recommended Dilution:	IF: 1/50-200 WB: 1/500-1/2000 IHC: 1/100-1/300 ELISA: 1/40000
Reactivity:	Human, Mouse, Rat
Host:	Rabbit
Isotype:	IgG
Clonality:	Polyclonal
Immunogen:	The antiserum was produced against synthesized peptide derived from human HIF-1alpha. AA range:328-377
Formulation:	Liquid in PBS containing 50% glycerol, 0.5% BSA and 0.02% sodium azide, pH 7.3.
Concentration:	lot specific
Purification:	Affinity Purified
Conjugation:	Unconjugated
Storage:	Store at 4°C short term. Aliquot and store at -20°C long term. Avoid freeze/thaw cycles.
Stability:	1 year
Predicted Protein Size:	Observed MW (kDa):92-130
Gene Name:	hypoxia inducible factor 1 alpha subunit
Database Link:	Entrez Gene 3091 Human Q16665
Background:	Swiss-Prot Acc.Q16665.
Synonyms:	bHLHe78; HIF-1alpha; HIF1; HIF1-ALPHA; MOP1; PASD8

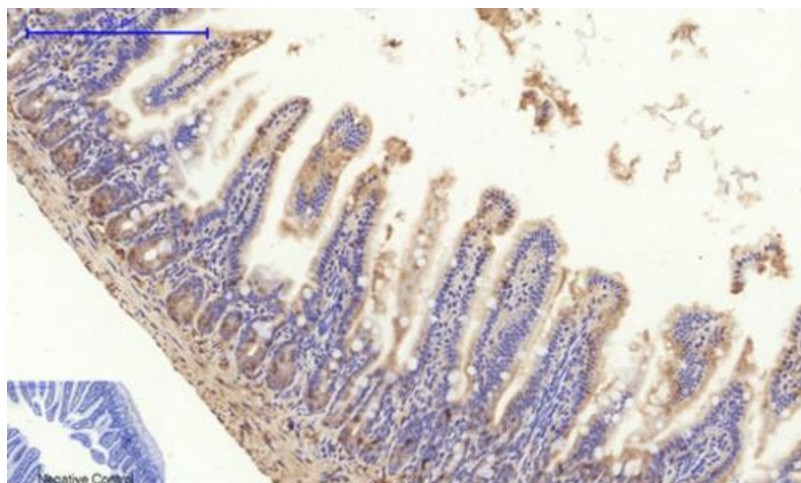


[View online »](#)

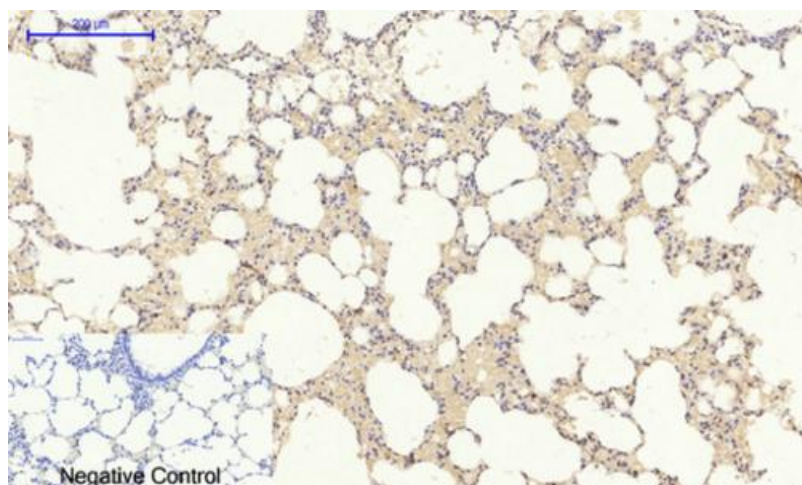
Product images:



Western blot analysis of HIF1 alpha in LOVO lysates using HIF1 alpha antibody.



Immunohistochemical analysis of paraffin-embedded Mouse-colon tissue using HIF-1 alpha Polyclonal Antibody diluted at 1:200 (4°C, overnight)



Immunohistochemical analysis of paraffin-embedded Rat-lung tissue using HIF-1 alpha Polyclonal Antibody diluted at 1:200(4°C,overnight).