

Product datasheet for **TA384401**

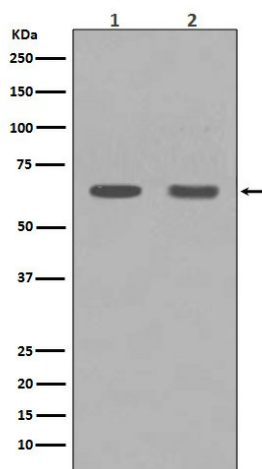
HDAC1 Rabbit Polyclonal Antibody

Product data:

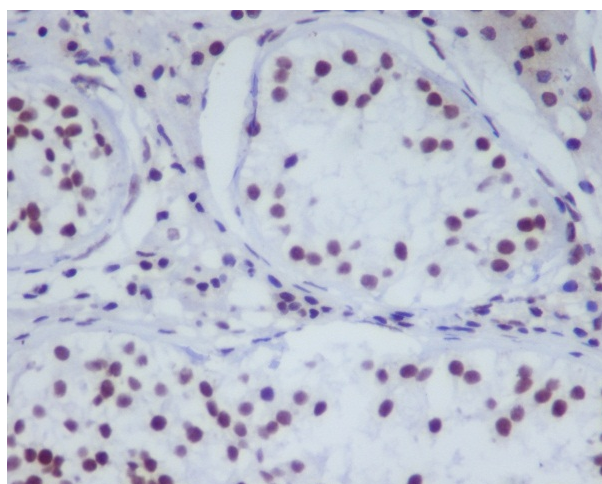
Product Type:	Primary Antibodies
Applications:	IF, IHC, WB
Recommended Dilution:	WB: 1/1000-1/2000 IHC: 1/50-1/200 ICC/IF: 1/50-1/200
Reactivity:	Human, Mouse, Rat
Host:	Rabbit
Isotype:	IgG
Clonality:	Polyclonal
Immunogen:	A synthesized peptide derived from human HDAC1
Formulation:	Rabbit IgG in phosphate buffered saline , pH 7.4, 150mM NaCl, 0.02% sodium azide and 50% glycerol.
Concentration:	lot specific
Purification:	Affinity Chromatography
Conjugation:	Unconjugated
Storage:	Store at 4°C short term. Aliquot and store at -20°C long term. Avoid freeze/thaw cycles.
Stability:	1 year
Predicted Protein Size:	55kDa
Gene Name:	histone deacetylase 1
Database Link:	Entrez Gene 3065 Human Q13547
Background:	Swiss-Prot Acc.Q13547.HDAC1 a transcriptional regulator of the histone deacetylase family, subfamily 1. Deacetylates lysine residues on the N-terminal part of the core histones H2A, H2B, H3 AND H4. Plays an important role in transcriptional regulation, cell cycle progression and developmental events.
Synonyms:	DKFZp686H12203; GON-10; HD1; RPD3; RPD3L1



[View online »](#)

Product images:

Western blot analysis of HDAC1 in (1) C6 lysates; (2) NIH/3T3 lysates using HDAC1 antibody.



Immunohistochemistry analysis of paraffin-embedded Human testis using HDAC1 antibody. High-pressure and temperature Sodium Citrate pH 6.0 was used for antigen retrieval.