

Product datasheet for **TA384400**

HB EGF (HBEGF) Rabbit Monoclonal Antibody [Clone ID: R08-9C2]

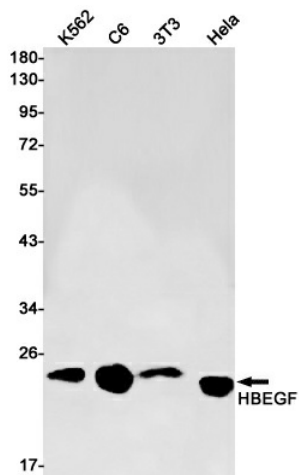
Product data:

Product Type:	Primary Antibodies
Clone Name:	R08-9C2
Applications:	WB
Recommended Dilution:	WB: 1/2000-1/10000
Reactivity:	Human, Mouse, Rat
Host:	Rabbit
Isotype:	IgG
Clonality:	Monoclonal
Immunogen:	A synthetic peptide of human HBEGF
Formulation:	50mM Tris-Glycine(pH 7.4), 0.15M NaCl, 40% Glycerol, 0.01% Sodium azide and 0.05% BSA
Concentration:	lot specific
Purification:	Affinity Purified
Conjugation:	Unconjugated
Storage:	Store at 4°C short term. Aliquot and store at -20°C long term. Avoid freeze/thaw cycles.
Stability:	1 year
Predicted Protein Size:	Calculated MW: 23 kDa; Observed MW: 23 kDa
Gene Name:	heparin binding EGF like growth factor
Database Link:	Entrez Gene 1839 Human Q99075
Background:	Swiss-Prot Acc.Q99075.Growth factor that mediates its effects via EGFR, ERBB2 and ERBB4. Required for normal cardiac valve formation and normal heart function. Promotes smooth muscle cell proliferation. May be involved in macrophage-mediated cellular proliferation. It is mitogenic for fibroblasts, but not endothelial cells. It is able to bind EGF receptor/EGFR with higher affinity than EGF itself and is a far more potent mitogen for smooth muscle cells than EGF. Also acts as a diphtheria toxin receptor.SitesFeature keyPosition(s)Description
Synonyms:	DTR; DTS; DTSF; HEGFL



[View online »](#)

Product images:



Western blot analysis of HBEGF in K562, C6, 3T3, HeLa lysates using HBEGF antibody.