

## Product datasheet for **TA384398S**

### HAT1 Rabbit Monoclonal Antibody [Clone ID: R02-4J1]

#### Product data:

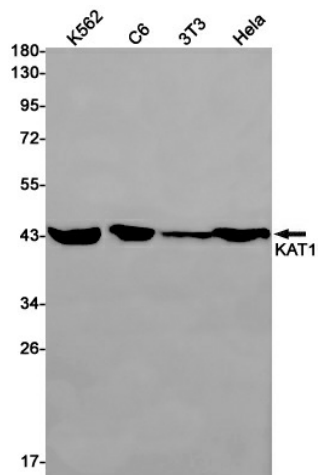
Product Type:	Primary Antibodies
Clone Name:	R02-4J1
Applications:	IF, IHC, IP, WB
Recommended Dilution:	WB: 1/1000 IHC: 1/100 ICC/IF: 1/100 IP: 1/20
Reactivity:	Human, Mouse, Rat
Host:	Rabbit
Isotype:	IgG
Clonality:	Monoclonal
Immunogen:	Recombinant protein of human KAT1
Formulation:	50mM Tris-Glycine(pH 7.4), 0.15M NaCl, 40% Glycerol, 0.01% Sodium azide and 0.05% BSA
Concentration:	lot specific
Purification:	Affinity Purified
Conjugation:	Unconjugated
Storage:	Store at 4°C short term. Aliquot and store at -20°C long term. Avoid freeze/thaw cycles.
Stability:	1 year
Predicted Protein Size:	Calculated MW: 50 kDa; Observed MW: 45 kDa
Gene Name:	histone acetyltransferase 1
Database Link:	<a href="#">Entrez Gene 8520 Human O14929</a>
Background:	Swiss-Prot Acc.O14929.Acetylates soluble but not nucleosomal histone H4 at 'Lys-5' (H4K5ac) and 'Lys-12' (H4K12ac) and, to a lesser extent, acetylates histone H2A at 'Lys-5' (H2AK5ac). Has intrinsic substrate specificity that modifies lysine in recognition sequence GXGKXG. May be involved in nucleosome assembly during DNA replication and repair as part of the histone H3.1 and H3.3 complexes. May play a role in DNA repair in response to free radical damage.



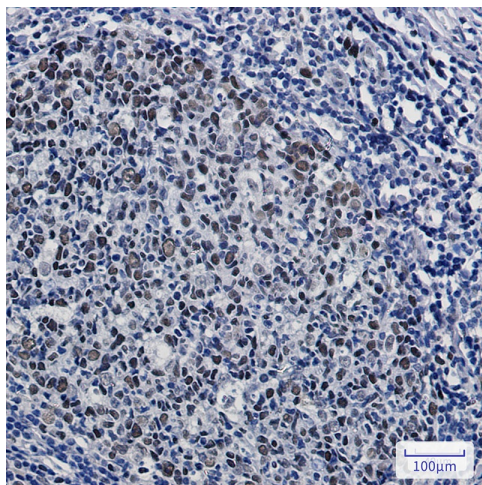
[View online »](#)

Synonyms: KAT1

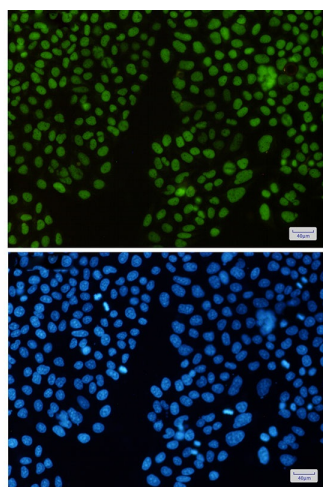
### Product images:



Western blot analysis of KAT1 in K562, C6, 3T3, HeLa lysates using KAT1 antibody.



Immunohistochemistry analysis of paraffin-embedded Human tonsil using KAT1/HAT1 antibody. High-pressure and temperature Sodium Citrate pH 6.0 was used for antigen retrieval.



Immunocytochemistry analysis of KAT1(green) in Hela using KAT1 antibody, and DAPI(blue)