

Product datasheet for **TA384396**

HADHA Rabbit Monoclonal Antibody [Clone ID: R08-9D9]

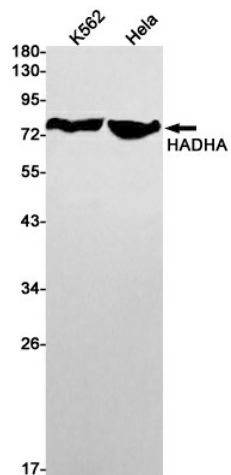
Product data:

Product Type:	Primary Antibodies
Clone Name:	R08-9D9
Applications:	IF, IP, WB
Recommended Dilution:	WB: 1/1000 ICC/IF: 1/50 IP: 1/20
Reactivity:	Human
Host:	Rabbit
Isotype:	IgG
Clonality:	Monoclonal
Immunogen:	A synthetic peptide of human HADHA
Formulation:	50mM Tris-Glycine(pH 7.4), 0.15M NaCl, 40% Glycerol, 0.01% Sodium azide and 0.05% BSA
Concentration:	lot specific
Purification:	Affinity Purified
Conjugation:	Unconjugated
Storage:	Store at 4°C short term. Aliquot and store at -20°C long term. Avoid freeze/thaw cycles.
Stability:	1 year
Predicted Protein Size:	Calculated MW: 83 kDa; Observed MW: 78 kDa
Gene Name:	hydroxyacyl-CoA dehydrogenase/3-ketoacyl-CoA thiolase/enoyl-CoA hydratase (trifunctional protein), alpha subunit
Database Link:	Entrez Gene 3030 Human P40939
Background:	Swiss-Prot Acc.P40939.Bifunctional subunit.
Synonyms:	ECHA; GBP; HADH; LCHAD; MGC1728; MTPA; TP-ALPHA

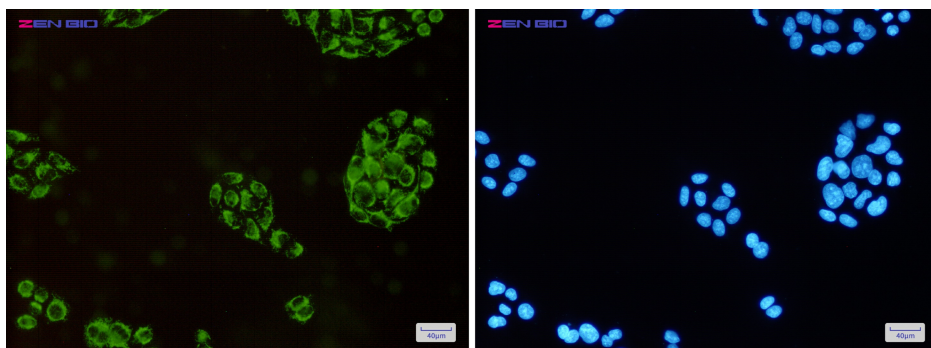


[View online »](#)

Product images:



Western blot detection of HADHA in K562, HeLa cell lysates using HADHA Rabbit mAb (1:1000 diluted). Predicted band size: 83 kDa. Observed band size: 78 kDa.



Immunocytochemistry of HADHA (green) in HeLa cells using HADHA Rabbit mAb at dilution 1/50, and DAPI (blue)