

Product datasheet for **TA384395**

H4-16 Rabbit Polyclonal Antibody

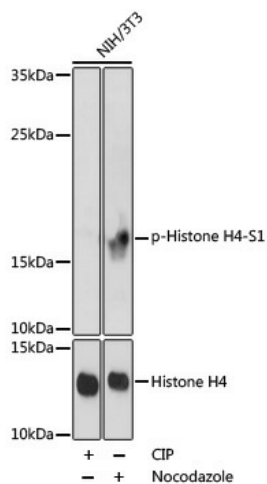
Product data:

Product Type:	Primary Antibodies
Applications:	IHC, WB
Recommended Dilution:	WB: 1/500-1/2000 IHC: 1/100-1/200
Reactivity:	Human, Mouse, Rat
Host:	Rabbit
Isotype:	IgG
Clonality:	Polyclonal
Immunogen:	A phospho specific peptide corresponding to residues surrounding S1 of human Histone H4. Email for sequence (Phosphorylated)
Formulation:	Liquid in PBS containing 50% glycerol, 0.5% BSA and 0.02% sodium azide, pH 7.3.
Concentration:	lot specific
Purification:	Affinity Purified
Conjugation:	Unconjugated
Storage:	Store at 4°C short term. Aliquot and store at -20°C long term. Avoid freeze/thaw cycles.
Stability:	1 year
Predicted Protein Size:	Observed MW:17kDa
Gene Name:	histone cluster 4, H4
Database Link:	Entrez Gene 121504 Human P62805
Background:	Swiss-Prot Acc.P62805.
Synonyms:	H4/A; H4/B; H4/C; H4/D; H4/E; H4/G; H4/H; H4/I; H4/J; H4/K; H4/M; H4/N; H4/O; H4/p; H4F2; H4FA; H4FB; H4FC; H4FD; H4FE; H4FG; H4FH; H4FI; H4FJ; H4FK; H4FM; H4FN; H4FO; HIST2H4; MGC24116



[View online »](#)

Product images:



Western blot analysis of Phospho-Histone H4 (Ser1) in NIH/3T3 lysates using Phospho-STK4T387 antibody. NIH/3T3 were treated by CIP at 37°C for 1 hour or Nocodazole at 37°C for 20 hours.