

## Product datasheet for **TA384383**

### H3FT (HIST3H3) Rabbit Polyclonal Antibody

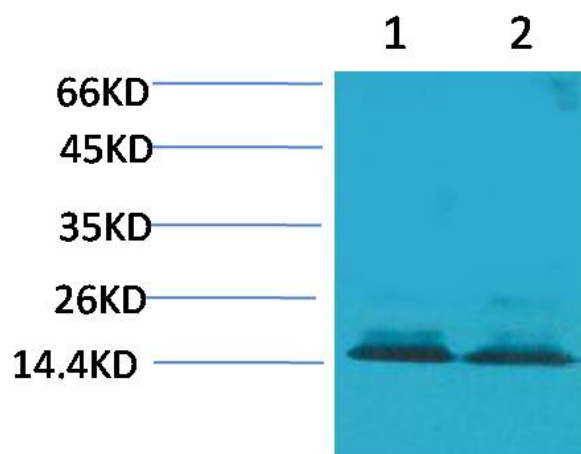
#### Product data:

Product Type:	Primary Antibodies
Applications:	IHC, WB
Recommended Dilution:	WB: 1/500-1000 IHC: 1/100-200
Reactivity:	Human, Mouse, Rat
Host:	Rabbit
Isotype:	IgG
Clonality:	Polyclonal
Immunogen:	Synthetic Peptide of Histone H3
Formulation:	Liquid in PBS containing 50% glycerol, 0.5% BSA and 0.02% sodium azide, pH 7.3.
Concentration:	lot specific
Purification:	Affinity Purified
Conjugation:	Unconjugated
Storage:	Store at 4°C short term. Aliquot and store at -20°C long term. Avoid freeze/thaw cycles.
Stability:	1 year
Predicted Protein Size:	Observed MW (kDa):15-17
Gene Name:	histone cluster 3, H3
Database Link:	<a href="#">Entrez Gene 8290 Human P68431</a>
Background:	Swiss-Prot Acc.P68431.
Synonyms:	H3.4; H3/g; H3/t; H3FT; H3t; MGC126886; MGC126888



[View online »](#)

## Product images:



Western blot analysis of Histone H3 in HeLa, 3T3 lysates using Histone H3(Citruline R2+R8+R17) antibody.