

Product datasheet for **TA384375**

H3.3A (H3F3A) Rabbit Polyclonal Antibody

Product data:

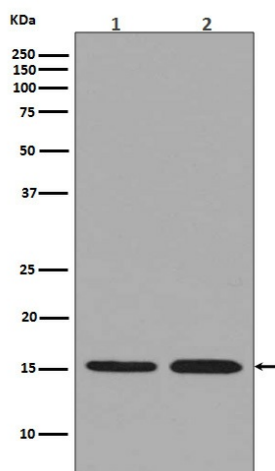
| | |
|-------------------------|--|
| Product Type: | Primary Antibodies |
| Applications: | IF, IHC, WB |
| Recommended Dilution: | WB: 1/500-1/1000 IHC: 1/500-1/1000 ICC/IF: 1/500-1/1000 |
| Reactivity: | Human, Mouse, Rat |
| Host: | Rabbit |
| Isotype: | IgG |
| Clonality: | Polyclonal |
| Immunogen: | A synthesized peptide derived from human Histone H3.3 |
| Formulation: | Rabbit IgG in phosphate buffered saline , pH 7.4, 150mM NaCl, 0.02% sodium azide and 50% glycerol. |
| Concentration: | lot specific |
| Purification: | Affinity Chromatography |
| Conjugation: | Unconjugated |
| Storage: | Store at 4°C short term. Aliquot and store at -20°C long term. Avoid freeze/thaw cycles. |
| Stability: | 1 year |
| Predicted Protein Size: | 15kDa |
| Gene Name: | H3 histone, family 3A |
| Database Link: | Entrez Gene 3020 Human P84243 |
| Background: | Swiss-Prot Acc.P84243.Variant histone H3 which replaces conventional H3 in a wide range of nucleosomes in active genes. Constitutes the predominant form of histone H3 in non-dividing cells and is incorporated into chromatin independently of DNA synthesis. Deposited at sites of nucleosomal displacement throughout transcribed genes, suggesting that it represents an epigenetic imprint of transcriptionally active chromatin. Nucleosomes wrap and compact DNA into chromatin, limiting DNA accessibility to the cellular machineries which require DNA as a template. |



[View online »](#)

Synonyms: H3.3A; H3.3B; H3F3; MGC87782; MGC87783; OTTHUMP00000035619; OTTHUMP00000035621

Product images:



Western blot analysis of Histone H3.3 in (1) HeLa lysates; (2) NIH/3T3 lysates using Histone H3.3 antibody.