

## Product datasheet for **TA384373**

### H2BC21 Rabbit Polyclonal Antibody

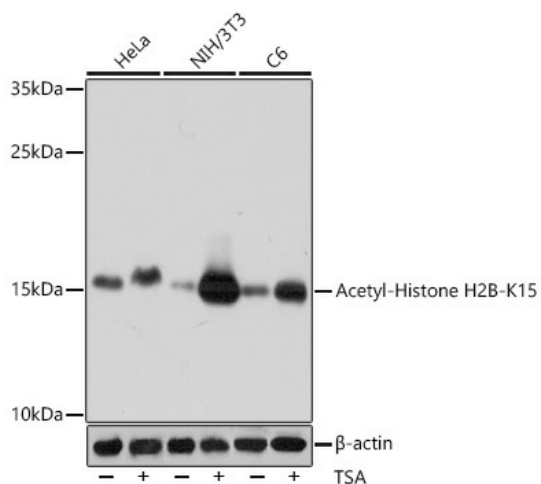
#### Product data:

Product Type:	Primary Antibodies
Applications:	IF, IHC, IP, WB
Recommended Dilution:	WB: 1/500-1/2000 IHC: 1/50-1/200 IP: 1/50-1/200
Reactivity:	Human, Mouse, Rat
Host:	Rabbit
Isotype:	IgG
Clonality:	Polyclonal
Immunogen:	AA synthetic acetylated peptide corresponding to residues surrounding K15 of human Histone H2B (Acetylated)
Formulation:	Liquid in PBS containing 50% glycerol, 0.5% BSA and 0.02% sodium azide, pH 7.3.
Concentration:	lot specific
Purification:	Affinity Purified
Conjugation:	Unconjugated
Storage:	Store at 4°C short term. Aliquot and store at -20°C long term. Avoid freeze/thaw cycles.
Stability:	1 year
Predicted Protein Size:	Observed MW (kDa): 15
Gene Name:	histone cluster 2, H2be
Database Link:	<a href="#">Entrez Gene 8349 Human P33778</a>
Synonyms:	GL105; H2B; H2B-GL105; H2B.1; H2B.q; H2B/q; H2BFQ; H2BGL105; H2BQ; MGC119802; MGC119804; MGC129733; MGC129734

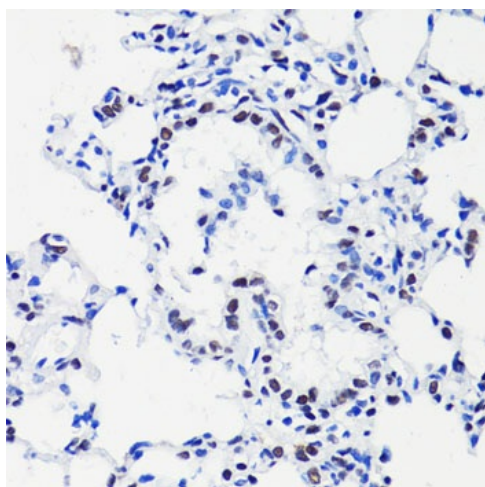


[View online »](#)

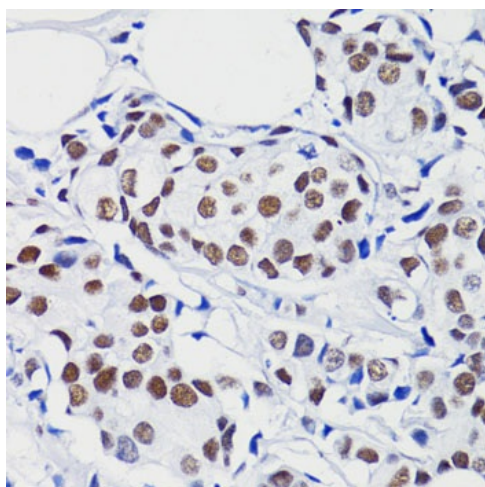
## Product images:



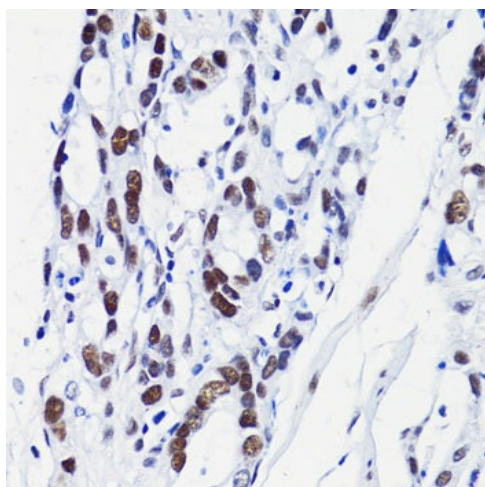
Western blot analysis of Acetyl-Histone H2B (Lys15) in various cell lines lysates using Acetyl-Histone H2BK15 antibody.



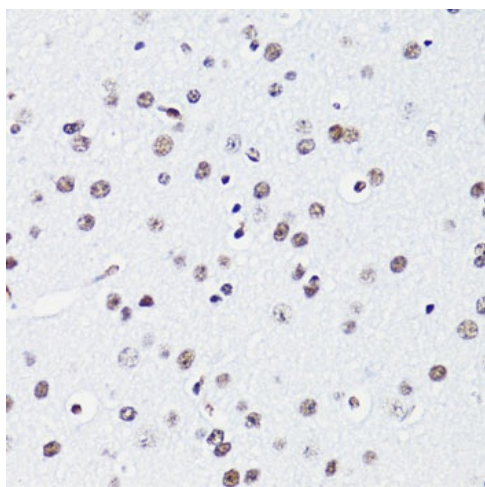
Immunohistochemistry analysis of paraffin-embedded rat lung using Acetyl-Histone H2B (Lys15) antibody. High-pressure and temperature Sodium Citrate pH 6.0 was used for antigen retrieval.



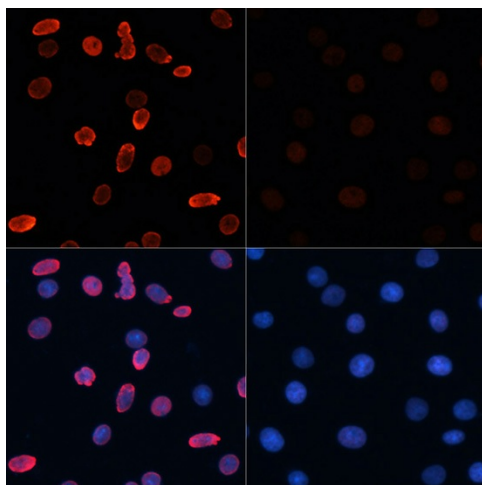
Immunohistochemistry analysis of paraffin-embedded Human breast cancer using H2B K15ac antibody. High-pressure and temperature Sodium Citrate pH 6.0 was used for antigen retrieval.



Immunohistochemistry analysis of paraffin-embedded Human gastric cancer using H2B K15ac antibody. High-pressure and temperature Sodium Citrate pH 6.0 was used for antigen retrieval.



Immunohistochemistry analysis of paraffin-embedded mouse brain using H2B K15ac antibody. High-pressure and temperature Sodium Citrate pH 6.0 was used for antigen retrieval.



Immunofluorescence analysis of Acetyl-Histone H2B (Lys15) in C6 using Acetyl-Histone H2BK15 antibody. C6 cells were treated by TSA, and DAPI (blue).