

Product datasheet for **TA384372**

H2BC21 Rabbit Polyclonal Antibody

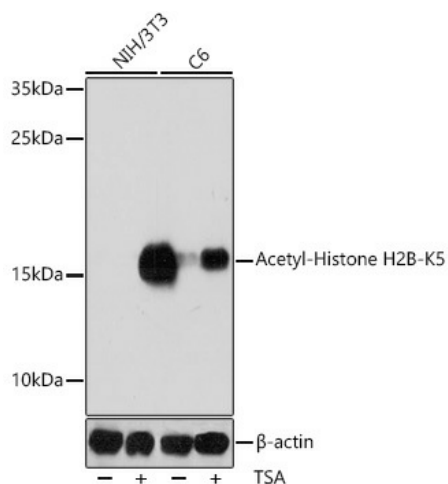
Product data:

Product Type:	Primary Antibodies
Applications:	ChIP, IF, IHC, IP, WB
Recommended Dilution:	WB: 1/500-1/2000 IHC: 1/50-1/200 IP: 1/50-1/100
Reactivity:	Human, Mouse, Rat
Host:	Rabbit
Isotype:	IgG
Clonality:	Polyclonal
Immunogen:	A synthetic acetylated peptide corresponding to residues surrounding K5 of human Histone H2B (Acetylated)
Formulation:	Liquid in PBS containing 50% glycerol, 0.5% BSA and 0.02% sodium azide, pH 7.3.
Concentration:	lot specific
Purification:	Affinity Purified
Conjugation:	Unconjugated
Storage:	Store at 4°C short term. Aliquot and store at -20°C long term. Avoid freeze/thaw cycles.
Stability:	1 year
Predicted Protein Size:	Observed MW (kDa): 15
Gene Name:	histone cluster 2, H2be
Database Link:	Entrez Gene 8349 Human P33778
Synonyms:	GL105; H2B; H2B-GL105; H2B.1; H2B.q; H2B/q; H2BFQ; H2BGL105; H2BQ; MGC119802; MGC119804; MGC129733; MGC129734

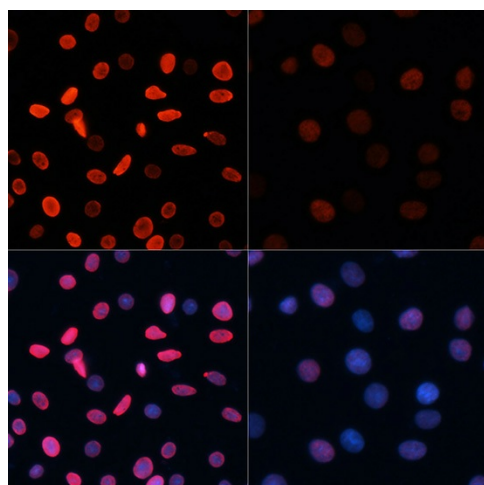


[View online »](#)

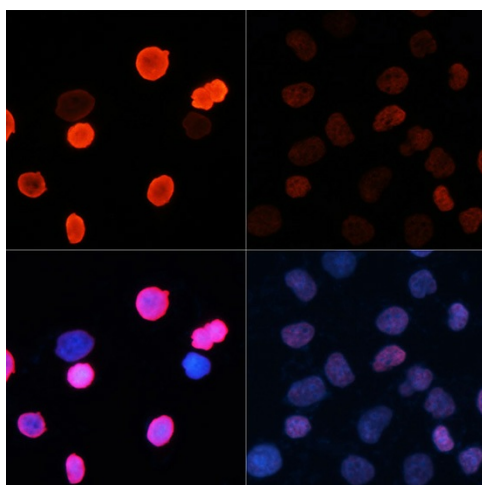
Product images:



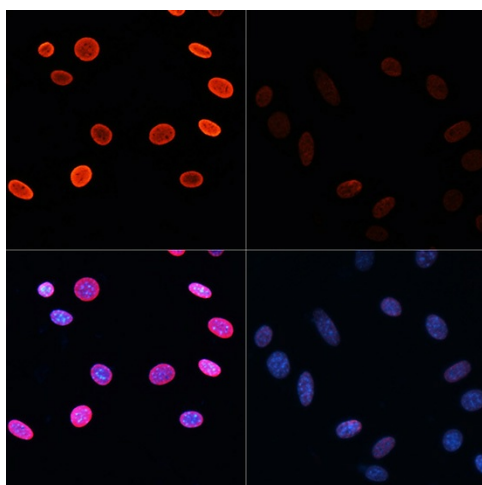
Western blot analysis of Acetyl-Histone H2B (Lys5) in various cell lines lysates using Acetyl-Histone H2B-K5 antibody.



Immunofluorescence analysis of Acetyl-Histone H2B (Lys5) in C6 using Acetyl-Histone H2B-K5 antibody. C6 cells were treated by TSA, and DAPI (blue).



Immunofluorescence analysis of Acetyl-Histone H2B (Lys5) in HeLa cells using Acetyl-Histone H2B-K5 antibody. HeLa cells were treated by TSA, and DAPI (blue).



Immunofluorescence analysis of Acetyl-Histone H2B (Lys5) in NIH/3T3 cells using Acetyl-Histone H2B-K5 antibody, and DAPI (blue). NIH/3T3 cells were treated by TSA.