

Product datasheet for **TA384371**

H2BC21 Rabbit Polyclonal Antibody

Product data:

Product Type:	Primary Antibodies
Applications:	ChIP, FC, IF, IHC, IP, WB
Recommended Dilution:	WB: 1/1000 IHC: 1/50-1/200 ICC/IF: 1/50-1/200 IP: 1/10 FC: 1/10
Reactivity:	Human, Mouse, Rat
Host:	Rabbit
Isotype:	IgG
Clonality:	Polyclonal
Immunogen:	A synthesized peptide derived from human Histone H2B (Acetylated)
Formulation:	Rabbit IgG in phosphate buffered saline , pH 7.4, 150mM NaCl, 0.02% sodium azide and 50% glycerol.
Concentration:	lot specific
Purification:	Affinity Chromatography
Conjugation:	Unconjugated
Storage:	Store at 4°C short term. Aliquot and store at -20°C long term. Avoid freeze/thaw cycles.
Stability:	1 year
Predicted Protein Size:	15kDa
Gene Name:	histone cluster 2, H2be
Database Link:	Entrez Gene 8349 Human P33778
Background:	Swiss-Prot Acc.P33778.Belongs to the histone H2B family. Play a central role in transcription regulation, DNA repair, DNA replication and chromosomal stability. DNA accessibility is regulated via a complex set of post-translational modifications of histones, also called histone code, and nucleosome remodeling.

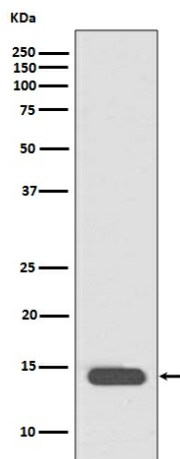


[View online »](#)

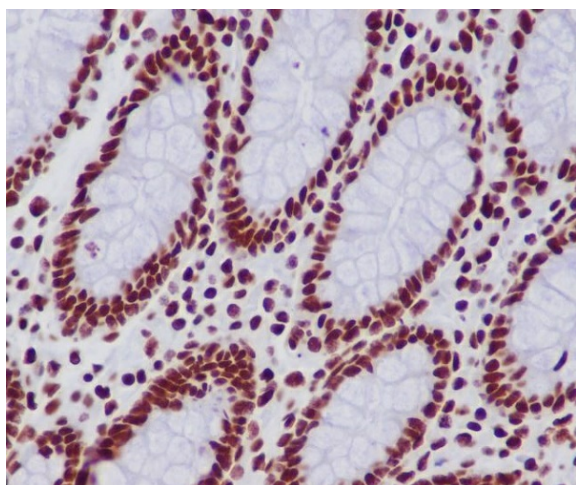
Synonyms:

GL105; H2B; H2B-GL105; H2B.1; H2B.q; H2B/q; H2BFQ; H2BGL105; H2BQ; MGC119802;
MGC119804; MGC129733; MGC129734

Product images:



Western blot analysis of Histone H2B (acetyl K20) in HeLa treated with TSA lysates using Acetyl-Histone H2B (Lys20) antibody.



Immunohistochemistry analysis of paraffin-embedded Human colon using Histone H2B (acetyl K20) antibody. High-pressure and temperature Sodium Citrate pH 6.0 was used for antigen retrieval.