

Product datasheet for **TA384367**

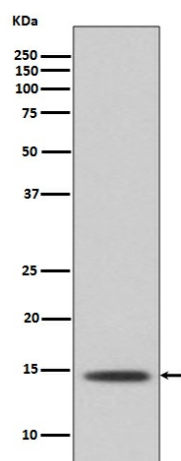
H2BC19P Rabbit Polyclonal Antibody

Product data:

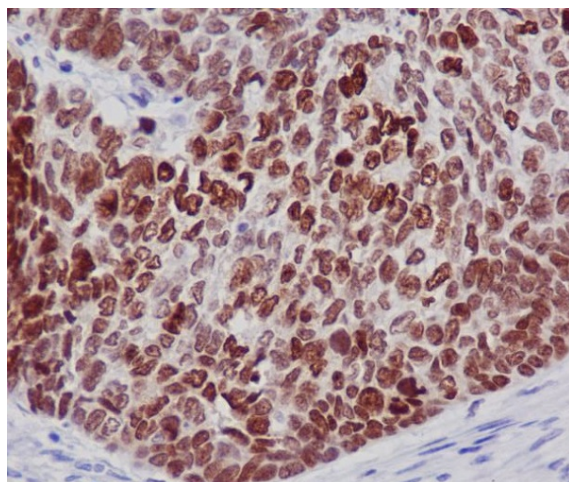
Product Type:	Primary Antibodies
Applications:	FC, IF, IHC, IP, WB
Recommended Dilution:	WB: 1/1000 IHC: 1/50-1/200 ICC/IF: 1/50-1/200 IP: 1/30 FC: 1/50
Reactivity:	Human, Mouse, Rat
Host:	Rabbit
Isotype:	IgG
Clonality:	Polyclonal
Immunogen:	A synthesized peptide derived from human Histone H2B
Formulation:	Rabbit IgG in phosphate buffered saline , pH 7.4, 150mM NaCl, 0.02% sodium azide and 50% glycerol.
Concentration:	lot specific
Purification:	Affinity Chromatography
Conjugation:	Unconjugated
Storage:	Store at 4°C short term. Aliquot and store at -20°C long term. Avoid freeze/thaw cycles.
Stability:	1 year
Predicted Protein Size:	14kDa
Gene Name:	histone cluster 2, H2bd (pseudogene)
Database Link:	Entrez Gene 337874 Human O60814
Background:	Swiss-Prot Acc.O60814.Core component of nucleosome. Nucleosomes wrap and compact DNA into chromatin, limiting DNA accessibility to the cellular machineries which require DNA as a template. Histones thereby play a central role in transcription regulation, DNA repair, DNA replication and chromosomal stability.
Synonyms:	HIST2H2BD



[View online »](#)

Product images:

Western blot analysis of Histone H2B in A431 lysates using Histone H2B antibody.



Immunohistochemistry analysis of paraffin-embedded Human lung cancer using Histone H2B antibody. High-pressure and temperature Sodium Citrate pH 6.0 was used for antigen retrieval.