

## Product datasheet for **TA384363**

### Histone H2A.X (H2AFX) Rabbit Polyclonal Antibody

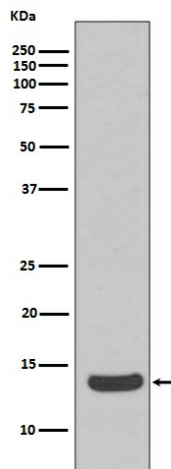
#### Product data:

Product Type:	Primary Antibodies
Applications:	IF, IHC, IP, WB
Recommended Dilution:	WB: 1/500-1/2000 IHC: 1/50-1/200 ICC/IF: 1/50-1/200 IP: 1/50
Reactivity:	Human, Mouse, Rat
Host:	Rabbit
Isotype:	IgG
Clonality:	Polyclonal
Immunogen:	A synthesized peptide derived from human Histone H2A.X
Formulation:	Rabbit IgG in phosphate buffered saline , pH 7.4, 150mM NaCl, 0.02% sodium azide and 50% glycerol.
Concentration:	lot specific
Purification:	Affinity Chromatography
Conjugation:	Unconjugated
Storage:	Store at 4°C short term. Aliquot and store at -20°C long term. Avoid freeze/thaw cycles.
Stability:	1 year
Predicted Protein Size:	14kDa
Gene Name:	H2A histone family member X
Database Link:	<a href="#">Entrez Gene 3014 Human P16104</a>
Background:	Swiss-Prot Acc.P16104.Variant histone H2A which replaces conventional H2A in a subset of nucleosomes. Nucleosomes wrap and compact DNA into chromatin, limiting DNA accessibility to the cellular machineries which require DNA as a template. Histones thereby play a central role in transcription regulation, DNA repair, DNA replication and chromosomal stability.
Synonyms:	H2A.X; H2A/X; H2AX

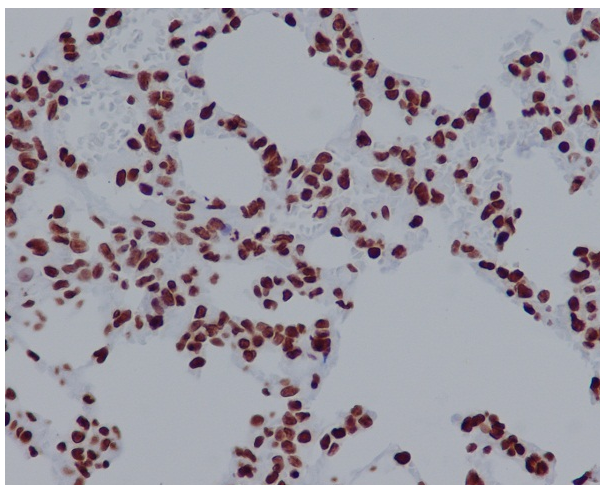


[View online »](#)

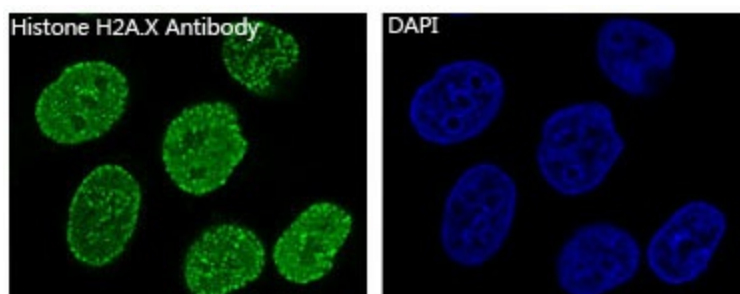
## Product images:



Western blot analysis of Histone H2A.X in Raji lysates using Histone H2A.X antibody.



Immunohistochemistry analysis of paraffin-embedded rat lung using Histone H2A.X antibody. High-pressure and temperature Sodium Citrate pH 6.0 was used for antigen retrieval.



Immunofluorescence analysis of Histone H2A.X in HeLa using Histone H2A.X antibody.