

Product datasheet for **TA384362**

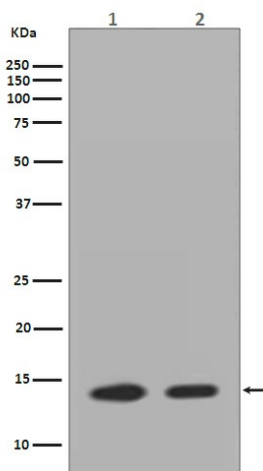
H2AC8 Rabbit Polyclonal Antibody

Product data:

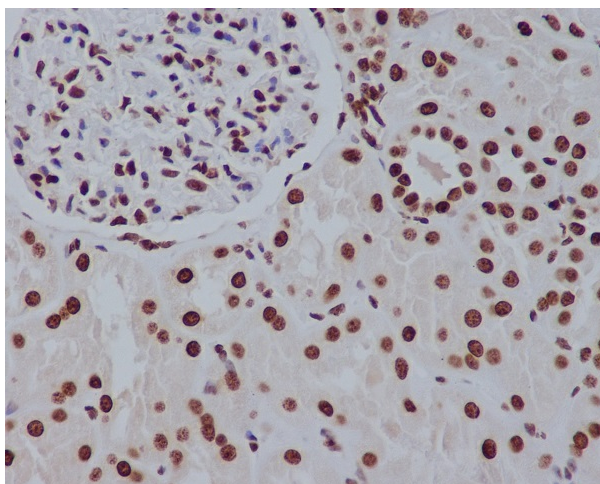
Product Type:	Primary Antibodies
Applications:	IF, IHC, WB
Recommended Dilution:	WB: 1/500-1/2000 IHC: 1/50-1/200 ICC/IF: 1/50-1/200
Reactivity:	Human, Mouse, Rat
Host:	Rabbit
Isotype:	IgG
Clonality:	Polyclonal
Immunogen:	A synthesized peptide derived from human Histone H2A.Z
Formulation:	Rabbit IgG in phosphate buffered saline , pH 7.4, 150mM NaCl, 0.02% sodium azide and 50% glycerol.
Concentration:	lot specific
Purification:	Affinity Chromatography
Conjugation:	Unconjugated
Storage:	Store at 4°C short term. Aliquot and store at -20°C long term. Avoid freeze/thaw cycles.
Stability:	1 year
Predicted Protein Size:	13kDa
Gene Name:	histone cluster 1, H2ae
Database Link:	Entrez Gene 3012 Human P04908
Background:	Swiss-Prot Acc.P04908.Core component of nucleosome. Nucleosomes wrap and compact DNA into chromatin, limiting DNA accessibility to the cellular machineries which require DNA as a template. Histones thereby play a central role in transcription regulation, DNA repair, DNA replication and chromosomal stability. DNA accessibility is regulated via a complex set of post-translational modifications of histones, also called histone code, and nucleosome remodeling.
Synonyms:	H2A.1; H2A.2; H2A/a; H2A/m; H2AFA; H2AFM



[View online »](#)

Product images:

Western blot analysis of Histone H2A.Z in(1)Neuro2a lysates;(2)HeLa lysates using Histone H2A antibody.



Immunohistochemistry analysis of paraffin-embedded Human kidney using Histone H2A.Z antibody.High-pressure and temperature Sodium Citrate pH 6.0 was used for antigen retrieval.