

## Product datasheet for TA384359M

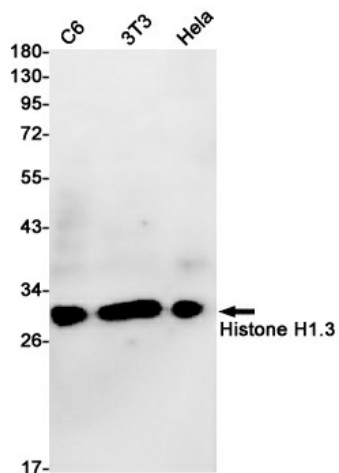
### Histone H1.3 (HIST1H1D) Rabbit Monoclonal Antibody [Clone ID: R09-8H7]

#### Product data:

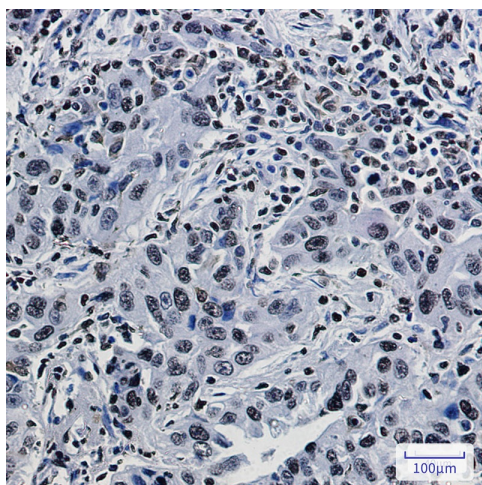
Product Type:	Primary Antibodies
Clone Name:	R09-8H7
Applications:	IF, IHC, WB
Recommended Dilution:	WB: 1/1000 IHC: 1/200 ICC/IF: 1/100
Reactivity:	Human, Mouse, Rat
Host:	Rabbit
Isotype:	IgG
Clonality:	Monoclonal
Immunogen:	A synthetic peptide of human Histone H1.3
Formulation:	50mM Tris-Glycine(pH 7.4), 0.15M NaCl, 40% Glycerol, 0.01% Sodium azide and 0.05% BSA
Concentration:	lot specific
Purification:	Affinity Purified
Conjugation:	Unconjugated
Storage:	Store at 4°C short term. Aliquot and store at -20°C long term. Avoid freeze/thaw cycles.
Stability:	1 year
Predicted Protein Size:	Calculated MW: 22 kDa; Observed MW: 30 kDa
Gene Name:	histone cluster 1, H1d
Database Link:	<a href="#">Entrez Gene 3007 Human P16402</a>
Background:	Swiss-Prot Acc.P16402.Histone H1 protein binds to linker DNA between nucleosomes forming the macromolecular structure known as the chromatin fiber. Histones H1 are necessary for the condensation of nucleosome chains into higher-order structured fibers. Acts also as a regulator of individual gene transcription through chromatin remodeling, nucleosome spacing and DNA methylation .
Synonyms:	H1.3; H1F3; MGC138176


[View online »](#)

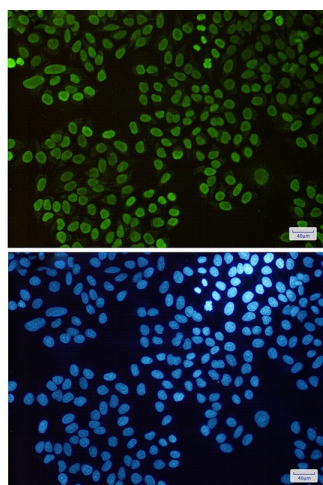
## Product images:



Western blot analysis of Histone H1.3 in C6, 3T3, HeLa lysates using Histone H1.3 antibody.



Immunohistochemistry analysis of paraffin-embedded Human lung cancer using Histone H1.3 antibody. High-pressure and temperature Sodium Citrate pH 6.0 was used for antigen retrieval.



Immunocytochemistry analysis of Histone H1.3(green) in HeLa using Histone H1.3 antibody, and DAPI(blue)