

Product datasheet for **TA384358S**

H10 (H1F0) Rabbit Monoclonal Antibody [Clone ID: R03-8B3]

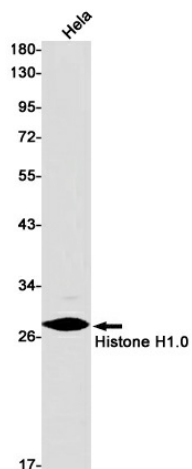
Product data:

| | |
|-------------------------|--|
| Product Type: | Primary Antibodies |
| Clone Name: | R03-8B3 |
| Applications: | WB |
| Recommended Dilution: | WB: 1/1000-1/5000 |
| Reactivity: | Human |
| Host: | Rabbit |
| Isotype: | IgG |
| Clonality: | Monoclonal |
| Immunogen: | A synthetic peptide of human Histone H1.0 |
| Formulation: | 50mM Tris-Glycine(pH 7.4), 0.15M NaCl, 40% Glycerol, 0.01% Sodium azide and 0.05% BSA |
| Concentration: | lot specific |
| Purification: | Affinity Purified |
| Conjugation: | Unconjugated |
| Storage: | Store at 4°C short term. Aliquot and store at -20°C long term. Avoid freeze/thaw cycles. |
| Stability: | 1 year |
| Predicted Protein Size: | Calculated MW: 21 kDa; Observed MW: 30 kDa |
| Gene Name: | H1 histone family member 0 |
| Database Link: | Entrez Gene 3005 Human P07305 |
| Background: | Swiss-Prot Acc.P07305.Histones H1 are necessary for the condensation of nucleosome chains into higher-order structures. The H1F0 histones are found in cells that are in terminal stages of differentiation or that have low rates of cell division. |
| Synonyms: | H1FV; H10; MGC5241 |



[View online »](#)

Product images:



Western blot analysis of Histone H1.0 in HeLa lysates using Histone H1.0 antibody.