

## Product datasheet for **TA384358**

### H10 (H1F0) Rabbit Monoclonal Antibody [Clone ID: R03-8B3]

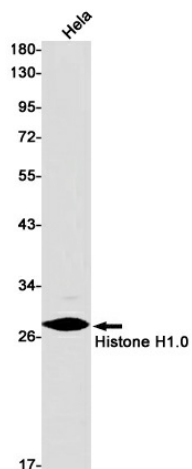
#### Product data:

Product Type:	Primary Antibodies
Clone Name:	R03-8B3
Applications:	WB
Recommended Dilution:	WB: 1/1000-1/5000
Reactivity:	Human
Host:	Rabbit
Isotype:	IgG
Clonality:	Monoclonal
Immunogen:	A synthetic peptide of human Histone H1.0
Formulation:	50mM Tris-Glycine(pH 7.4), 0.15M NaCl, 40% Glycerol, 0.01% Sodium azide and 0.05% BSA
Concentration:	lot specific
Purification:	Affinity Purified
Conjugation:	Unconjugated
Storage:	Store at 4°C short term. Aliquot and store at -20°C long term. Avoid freeze/thaw cycles.
Stability:	1 year
Predicted Protein Size:	Calculated MW: 21 kDa; Observed MW: 30 kDa
Gene Name:	H1 histone family member 0
Database Link:	<a href="#">Entrez Gene 3005 Human P07305</a>
Background:	Swiss-Prot Acc.P07305.Histones H1 are necessary for the condensation of nucleosome chains into higher-order structures. The H1F0 histones are found in cells that are in terminal stages of differentiation or that have low rates of cell division.
Synonyms:	H1FV; H10; MGC5241



[View online »](#)

## Product images:



Western blot analysis of Histone H1.0 in HeLa lysates using Histone H1.0 antibody.