

## Product datasheet for **TA384355S**

### Glycogen synthase 1 (GYS1) Rabbit Monoclonal Antibody [Clone ID: R03-3A1]

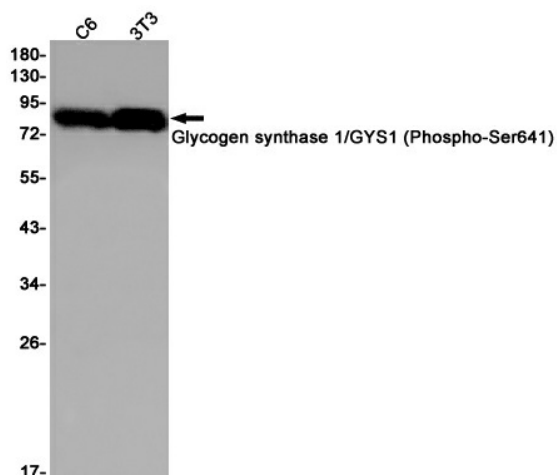
#### Product data:

Product Type:	Primary Antibodies
Clone Name:	R03-3A1
Applications:	IHC, IP, WB
Recommended Dilution:	WB: 1/1000 IHC: 1/50 IP: 1/20
Reactivity:	Human, Mouse, Rat
Host:	Rabbit
Isotype:	IgG
Clonality:	Monoclonal
Immunogen:	A synthetic phosphopeptide corresponding to residues surrounding Ser641 of human Glycogen synthase 1/GYS1 (Phosphorylated)
Formulation:	50mM Tris-Glycine(pH 7.4), 0.15M NaCl, 40% Glycerol, 0.01% Sodium azide and 0.05% BSA
Concentration:	lot specific
Purification:	Affinity Purified
Conjugation:	Unconjugated
Storage:	Store at 4°C short term. Aliquot and store at -20°C long term. Avoid freeze/thaw cycles.
Stability:	1 year
Predicted Protein Size:	Calculated MW: 84 kDa; Observed MW: 84 kDa
Gene Name:	glycogen synthase 1
Database Link:	<a href="#">Entrez Gene 2997 Human P13807</a>
Background:	Swiss-Prot Acc.P13807.Transfers the glycosyl residue from UDP-Glc to the non-reducing end of alpha-1,4-glucan.
Synonyms:	GSY; GYS

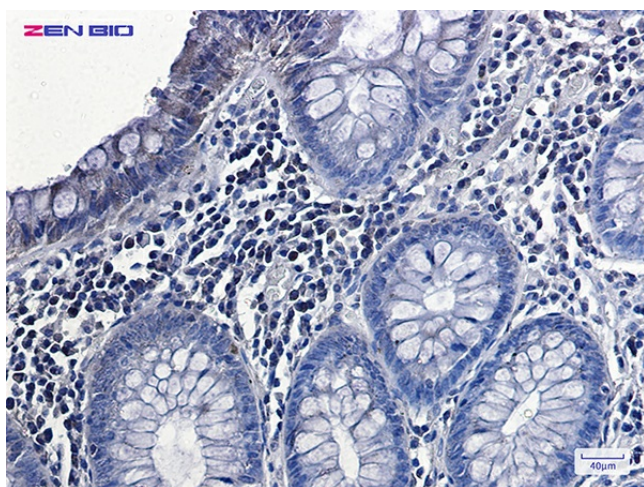


[View online »](#)

## Product images:



Western blot analysis of Glycogen synthase 1/GYS1 (Phospho-Ser641) in C6, 3T3 lysates using Phospho-Glycogen synthase (Ser641) antibody.



Immunohistochemistry of Phospho-Glycogen synthase (Ser641) in paraffin-embedded Human colon cancer tissue using Phospho-Glycogen synthase (Ser641) Rabbit mAb at dilution 1/50