

Product datasheet for **TA384354**

Glycogen synthase 1 (GYS1) Rabbit Polyclonal Antibody

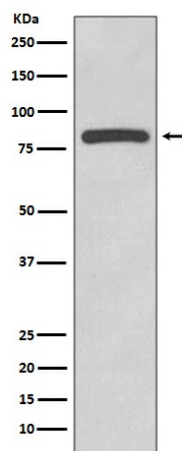
Product data:

Product Type:	Primary Antibodies
Applications:	FC, IF, IHC, IP, WB
Recommended Dilution:	WB: 1/1000 IHC: 1/50-1/200 ICC/IF: 1/50-1/200 FC: 1/50 IP: 1/50
Reactivity:	Human, Mouse, Rat
Host:	Rabbit
Isotype:	IgG
Clonality:	Polyclonal
Immunogen:	A synthesized peptide derived from human Glycogen synthase
Formulation:	Rabbit IgG in phosphate buffered saline , pH 7.4, 150mM NaCl, 0.02% sodium azide and 50% glycerol.
Concentration:	lot specific
Purification:	Affinity Chromatography
Conjugation:	Unconjugated
Storage:	Store at 4°C short term. Aliquot and store at -20°C long term. Avoid freeze/thaw cycles.
Stability:	1 year
Predicted Protein Size:	84kDa
Gene Name:	glycogen synthase 1
Database Link:	Entrez Gene 2997 Human P13807
Background:	Swiss-Prot Acc.P13807.Glycogen synthase is a key enzyme in the regulation of glycogen synthesis. Transfers glucosyl residue from UDP-glucose to glycogen. Regulated allosterically by glucose-6-phosphate, and by PKA-mediated phosphorylation.
Synonyms:	GSY; GYS



[View online »](#)

Product images:



Western blot analysis of Glycogen synthase in HeLa lysates using Glycogen Synthase 1 antibody.