

Product datasheet for **TA384352**

Glycophorin C (GYPC) Rabbit Polyclonal Antibody

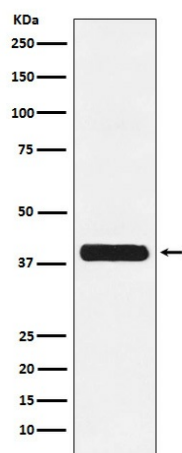
Product data:

Product Type:	Primary Antibodies
Applications:	FC, IF, IHC, IP, WB
Recommended Dilution:	WB: 1/500-1/2000 IHC: 1/50-1/200 ICC/IF: 1/50-1/200 IP: 1/50 FC: 1/50
Reactivity:	Human
Host:	Rabbit
Isotype:	IgG
Clonality:	Polyclonal
Immunogen:	A synthesized peptide derived from human Glycophorin C
Formulation:	Rabbit IgG in phosphate buffered saline , pH 7.4, 150mM NaCl, 0.02% sodium azide and 50% glycerol.
Concentration:	lot specific
Purification:	Affinity Chromatography
Conjugation:	Unconjugated
Storage:	Store at 4°C short term. Aliquot and store at -20°C long term. Avoid freeze/thaw cycles.
Stability:	1 year
Predicted Protein Size:	39kDa
Gene Name:	glycophorin C (Gerbich blood group)
Database Link:	Entrez Gene 2995 Human P04921
Background:	Swiss-Prot Acc.P04921.This protein is a minor sialoglycoprotein in human erythrocyte membranes. The blood group Gerbich antigens and receptors for Plasmodium falciparum merozoites are most likely located within the extracellular domain.
Synonyms:	CD236; CD236R; GE; GLPC; Glycoconnectin; Glycophorin-D; GPC; GPD; GYPD; MGC117309; MGC126191; MGC126192



[View online »](#)

Product images:



Western blot analysis of Glycophorin C in K562 lysates using Glycophorin C antibody.