

## Product datasheet for **TA384351M**

### **GST3 (GSTP1) Rabbit Monoclonal Antibody [Clone ID: R09-4G8]**

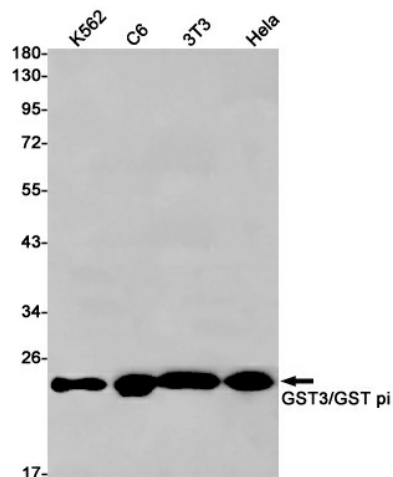
#### **Product data:**

Product Type:	Primary Antibodies
Clone Name:	R09-4G8
Applications:	IF, IHC, WB
Recommended Dilution:	WB: 1/1000-1/2000 IHC: 1/50-1/200 ICC/IF: 1/20-1/100
Reactivity:	Human, Mouse, Rat
Host:	Rabbit
Isotype:	IgG
Clonality:	Monoclonal
Immunogen:	A synthetic peptide of human GST3/GST pi
Formulation:	50mM Tris-Glycine(pH 7.4), 0.15M NaCl, 40% Glycerol, 0.01% Sodium azide and 0.05% BSA
Concentration:	lot specific
Purification:	Affinity Purified
Conjugation:	Unconjugated
Storage:	Store at 4°C short term. Aliquot and store at -20°C long term. Avoid freeze/thaw cycles.
Stability:	1 year
Predicted Protein Size:	Calculated MW: 23 kDa; Observed MW: 23 kDa
Gene Name:	glutathione S-transferase pi 1
Database Link:	<a href="#">Entrez Gene 2950 Human P09211</a>
Background:	Swiss-Prot Acc.P09211.Conjugation of reduced glutathione to a wide number of exogenous and endogenous hydrophobic electrophiles. Regulates negatively CDK5 activity via p25/p35 translocation to prevent neurodegeneration.
Synonyms:	DFN7; FAES3; GST3; GSTP; GSTP1-1; PI

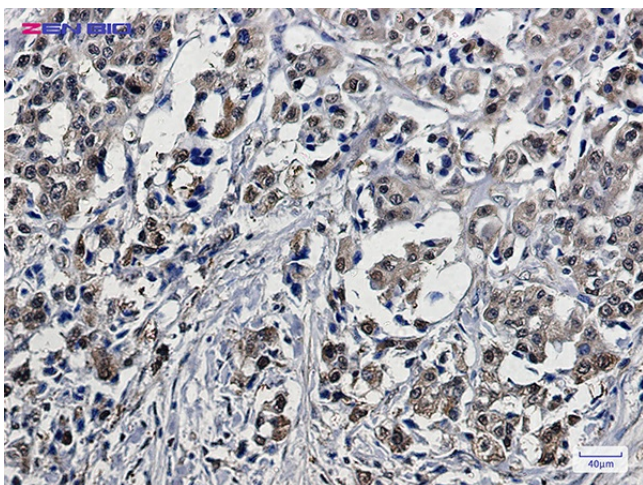


[View online »](#)

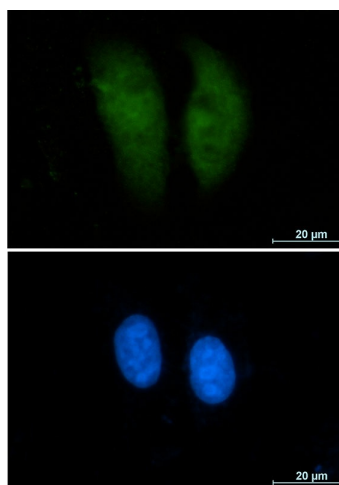
## Product images:



Western blot detection of GST3/GST pi in K562, C6, 3T3, HeLa cell lysates using GST3/GST pi Rabbit mAb (1:1000 diluted). Predicted band size: 23 kDa. Observed band size: 23 kDa.



Immunohistochemistry of GST3/GST pi in paraffin-embedded Human lung cancer tissue using GST3/GST pi Rabbit mAb at dilution 1/50.



Immunocytochemistry analysis of GST3 (green) in A549 using GST3 antibody, and DAPI (blue).