

## Product datasheet for **TA384350**

### **GST3 (GSTP1) Rabbit Polyclonal Antibody**

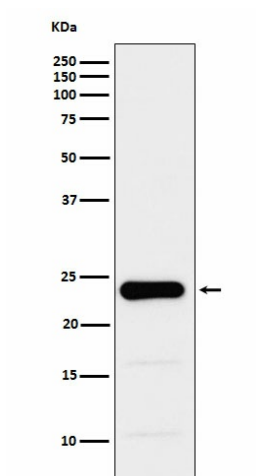
#### **Product data:**

Product Type:	Primary Antibodies
Applications:	IF, IHC, WB
Recommended Dilution:	WB: 1/500-1/2000 IHC: 1/50-1/200 ICC/IF: 1/50-1/200
Reactivity:	Human, Mouse, Rat
Host:	Rabbit
Isotype:	IgG
Clonality:	Polyclonal
Immunogen:	A synthesized peptide derived from human GST3 / GST pi
Formulation:	Rabbit IgG in phosphate buffered saline , pH 7.4, 150mM NaCl, 0.02% sodium azide and 50% glycerol.
Concentration:	lot specific
Purification:	Affinity Chromatography
Conjugation:	Unconjugated
Storage:	Store at 4°C short term. Aliquot and store at -20°C long term. Avoid freeze/thaw cycles.
Stability:	1 year
Predicted Protein Size:	23kDa
Gene Name:	glutathione S-transferase pi 1
Database Link:	<a href="#">Entrez Gene 2950 Human P09211</a>
Background:	Swiss-Prot Acc.P09211.Conjugation of reduced glutathione to a wide number of exogenous and endogenous hydrophobic electrophiles.
Synonyms:	DFN7; FAES3; GST3; GSTP; GSTP1-1; PI



[View online »](#)

## Product images:



Western blot analysis of GST3 / GST pi in PC-3 lysates using GST3 antibody.