

Product datasheet for **TA384347M**

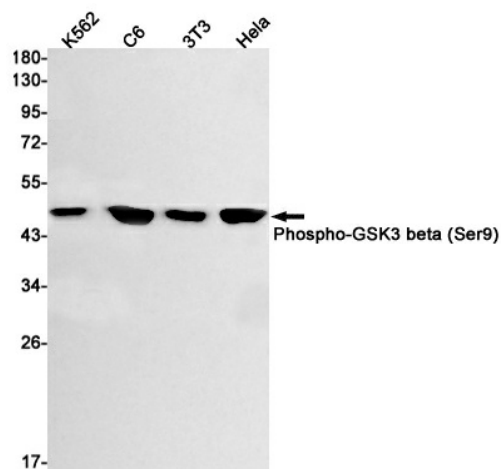
GSK3 beta (GSK3B) Rabbit Monoclonal Antibody [Clone ID: R06-6H5]

Product data:

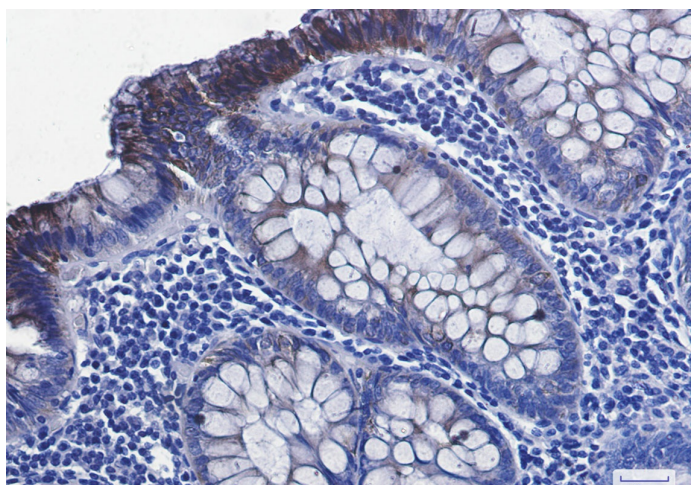
Product Type:	Primary Antibodies
Clone Name:	R06-6H5
Applications:	IF, IHC, WB
Recommended Dilution:	WB: 1/2000 IHC: 1/50 ICC/IF: 1/50
Reactivity:	Human, Mouse, Rat
Host:	Rabbit
Isotype:	IgG
Clonality:	Monoclonal
Immunogen:	A synthetic phosphopeptide corresponding to residues surrounding Ser9 of human GSK3 beta (Phosphorylated)
Formulation:	50mM Tris-Glycine(pH 7.4), 0.15M NaCl, 40% Glycerol, 0.01% Sodium azide and 0.05% BSA
Concentration:	lot specific
Purification:	Affinity Purified
Conjugation:	Unconjugated
Storage:	Store at 4°C short term. Aliquot and store at -20°C long term. Avoid freeze/thaw cycles.
Stability:	1 year
Predicted Protein Size:	Calculated MW: 47 kDa; Observed MW: 47 kDa
Gene Name:	glycogen synthase kinase 3 beta
Database Link:	Entrez Gene 2932 Human P49841
Background:	Swiss-Prot Acc.P49841.
Synonyms:	GSK3B

[View online »](#)

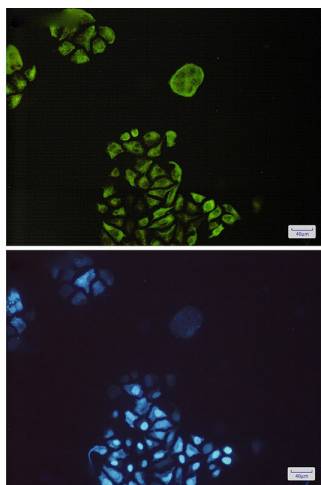
Product images:



Western blot analysis of Phospho-GSK3 beta (Ser9) in K562, C6, 3T3, HeLa lysates using Phospho-GSK3 beta (Ser9) antibody.



Immunohistochemistry analysis of paraffin-embedded Human colon cancer using Phospho-GSK3 beta (Ser9) antibody. High-pressure and temperature Sodium Citrate pH 6.0 was used for antigen retrieval.



Immunocytochemistry analysis of Phospho-GSK3 beta (Ser9)(green) in HeLa using Phospho-GSK3 beta (Ser9) antibody, and DAPI(blue)