

## Product datasheet for **TA384346S**

### **GSK3 beta (GSK3B) Rabbit Monoclonal Antibody [Clone ID: R09-7G8]**

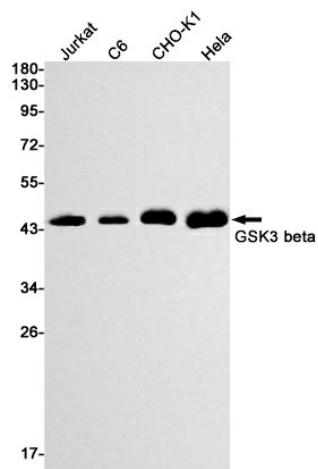
#### **Product data:**

Product Type:	Primary Antibodies
Clone Name:	R09-7G8
Applications:	IHC, WB
Recommended Dilution:	WB: 1/2000 IHC: 1/50
Reactivity:	Human, Rat, Hamster
Host:	Rabbit
Isotype:	IgG
Clonality:	Monoclonal
Immunogen:	A synthetic peptide of human GSK3 beta
Formulation:	50mM Tris-Glycine(pH 7.4), 0.15M NaCl, 40% Glycerol, 0.01% Sodium azide and 0.05% BSA
Concentration:	lot specific
Purification:	Affinity Purified
Conjugation:	Unconjugated
Storage:	Store at 4°C short term. Aliquot and store at -20°C long term. Avoid freeze/thaw cycles.
Stability:	1 year
Predicted Protein Size:	Calculated MW: 47 kDa; Observed MW: 47 kDa
Gene Name:	glycogen synthase kinase 3 beta
Database Link:	<a href="#">Entrez Gene 2932 Human P49841</a>
Background:	Swiss-Prot Acc.P49841.
Synonyms:	GSK3B

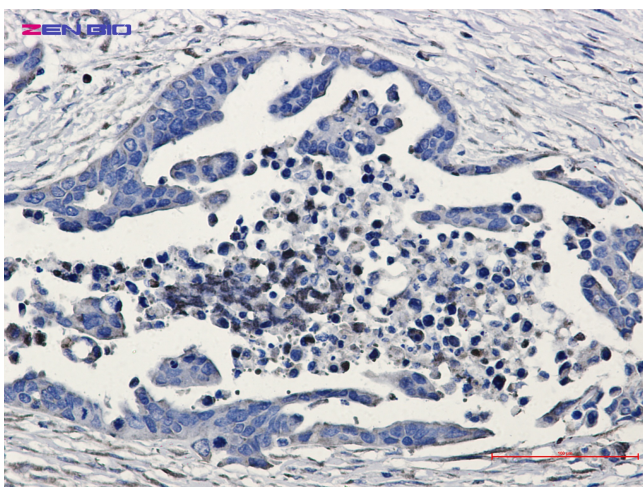


[View online »](#)

## Product images:



Western blot detection of GSK3 beta in Jurkat, C6, CHO-K1, HeLa cell lysates using GSK3 beta Rabbit mAb (1:1000 diluted). Predicted band size: 47 kDa. Observed band size: 47 kDa.



Immunohistochemistry of GSK3 beta in paraffin-embedded Human Cholangiocarcinoma using GSK3 beta Rabbit mAb at dilution 1/20