

## Product datasheet for **TA384345S**

### GSK3 beta (GSK3B) Rabbit Polyclonal Antibody

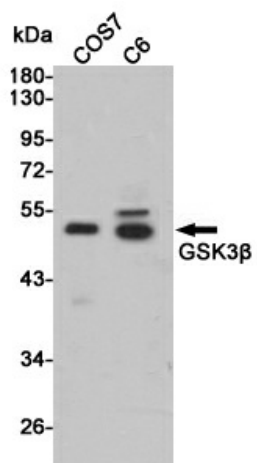
#### Product data:

Product Type:	Primary Antibodies
Applications:	ELISA, IF, IHC, IP, WB
Recommended Dilution:	IF: 1/50-200 WB: 1/500-1/2000 IHC: 1/100-1/300 Immunoprecipitation: 2-5 ELISA: 1/20000
Reactivity:	Human, Mouse, Rat
Host:	Rabbit
Isotype:	IgG
Clonality:	Polyclonal
Immunogen:	The antiserum was produced against synthesized peptide derived from human GSK3B. AA range:1-50
Formulation:	Liquid in PBS containing 50% glycerol, 0.5% BSA and 0.02% sodium azide, pH 7.3.
Concentration:	lot specific
Purification:	Affinity Purified
Conjugation:	Unconjugated
Storage:	Store at 4°C short term. Aliquot and store at -20°C long term. Avoid freeze/thaw cycles.
Stability:	1 year
Predicted Protein Size:	Observed MW (kDa):47
Gene Name:	glycogen synthase kinase 3 beta
Database Link:	<a href="#">Entrez Gene 2932 Human P49841</a>
Background:	Swiss-Prot Acc.P49841.
Synonyms:	GSK3B



[View online »](#)

## Product images:



Western blot analysis of GSK3beta in COS7 and C6 lysates using GSK3beta antibody.