

## Product datasheet for **TA384341S**

### **GSK3 beta (GSK3B) Mouse Monoclonal Antibody [Clone ID: 7D8A6]**

#### **Product data:**

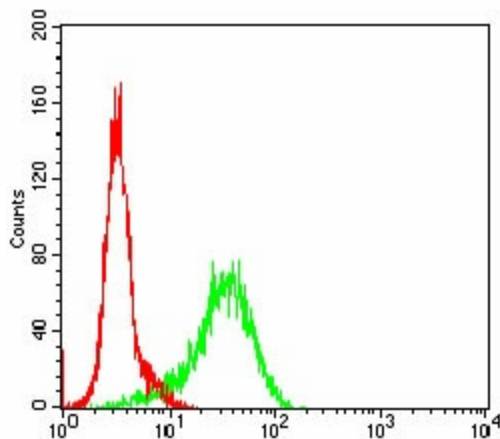
Product Type:	Primary Antibodies
Clone Name:	7D8A6
Applications:	FC, IHC, WB
Recommended Dilution:	WB: 1/500-1/2000 IHC: 1/200-1/1000 FC: 1/200-1/400
Reactivity:	Human, Mouse, Rat
Host:	Mouse
Isotype:	IgG1
Clonality:	Monoclonal
Immunogen:	Purified recombinant fragment of human GSK3B (AA: 2-159) expressed in E. Coli.
Formulation:	Liquid in PBS containing 50% glycerol, 0.5% BSA and 0.03% Proclin 300, pH 7.3.
Concentration:	lot specific
Purification:	Affinity Purified
Conjugation:	Unconjugated
Storage:	Store at 4°C short term. Aliquot and store at -20°C long term. Avoid freeze/thaw cycles.
Stability:	1 year
Predicted Protein Size:	46.7kDa
Gene Name:	glycogen synthase kinase 3 beta
Database Link:	<a href="#">Entrez Gene 2932 Human P49841</a>
Background:	Swiss-Prot Acc.P49841.The protein encoded by this gene is a serine-threonine kinase, belonging to the glycogen synthase kinase subfamily. It is involved in energy metabolism, neuronal cell development, and body pattern formation. Polymorphisms in this gene have been implicated in modifying risk of Parkinson disease, and studies in mice show that overexpression of this gene may be relevant to the pathogenesis of Alzheimer disease. Alternatively spliced transcript variants encoding different isoforms have been found for this gene.



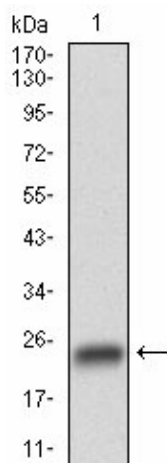
[View online »](#)

Synonyms: GSK3B

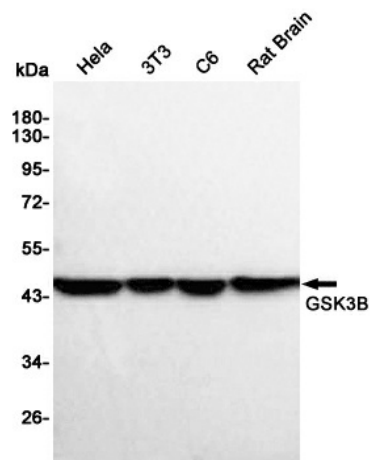
### Product images:



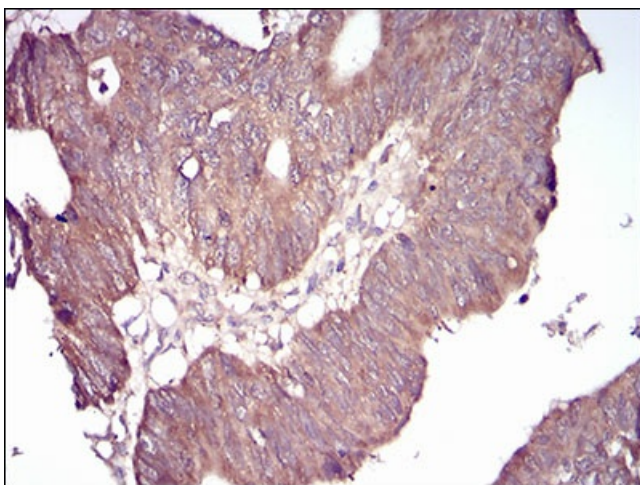
Flow cytometric analysis of NIH/3T3 cells using GSK3B mouse mAb (green) and negative control (red).



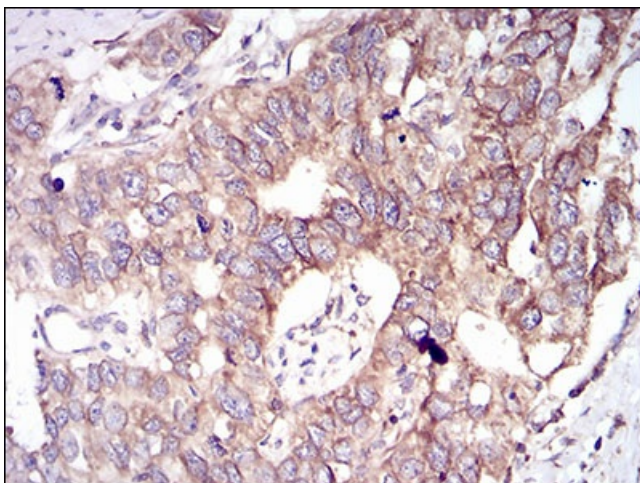
Western blot analysis using GSK3B mAb against human GSK3B (AA: 2-159) recombinant protein. (Expected MW is 20.3 kDa)



Western blot detection of Anti-GSK3B Mouse mAb in HeLa,3T3,C6,Rat Brain cell lysates using Anti-GSK3B Mouse mAb(1:1000 diluted).Predicted band size:46.7KDa.Observed band size:46KDa.



Immunohistochemical analysis of paraffin-embedded rectum cancer tissues using GSK3B mouse mAb with DAB staining.



Immunohistochemical analysis of paraffin-embedded esophageal cancer tissues using GSK3B mouse mAb with DAB staining.