

Product datasheet for **TA384338S**

GSDME Rabbit Monoclonal Antibody [Clone ID: R09-7C1]

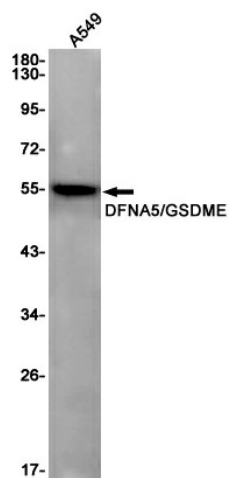
Product data:

Product Type:	Primary Antibodies
Clone Name:	R09-7C1
Applications:	IP, WB
Recommended Dilution:	WB: 1/1000 IP: 1/20
Reactivity:	Human
Host:	Rabbit
Isotype:	IgG
Clonality:	Monoclonal
Immunogen:	Recombinant protein of human DFNA5/GSDME
Formulation:	50mM Tris-Glycine(pH 7.4), 0.15M NaCl, 40% Glycerol, 0.01% Sodium azide and 0.05% BSA
Concentration:	lot specific
Purification:	Affinity Purified
Conjugation:	Unconjugated
Storage:	Store at 4°C short term. Aliquot and store at -20°C long term. Avoid freeze/thaw cycles.
Stability:	1 year
Predicted Protein Size:	Calculated MW: 55 kDa; Observed MW: 55 kDa
Gene Name:	DFNA5, deafness associated tumor suppressor
Database Link:	Entrez Gene 1687 Human O60443
Background:	Swiss-Prot Acc.O60443.Plays a role in the TP53-regulated cellular response to DNA damage probably by cooperating with TP53 (PubMed:16897187, PubMed:18223688).
Synonyms:	ICERE-1; ICERE1; OTTHUMP00000202026



[View online »](#)

Product images:



Western blot detection of DFNA5/GSDME in A549 cell lysates using DFNA5/GSDME Rabbit mAb(1:1000 diluted). Predicted band size:55KDa.Observed band size:55KDa.