

## Product datasheet for **TA384335M**

### Metabotropic Glutamate Receptor 2 (GRM2) Rabbit Monoclonal Antibody [Clone ID: R04-2D1]

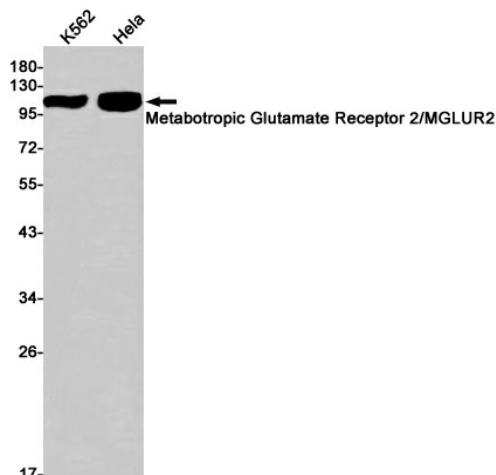
#### Product data:

Product Type:	Primary Antibodies
Clone Name:	R04-2D1
Applications:	IHC, WB
Recommended Dilution:	WB: 1/2000-1/10000 IHC: 1/50
Reactivity:	Human, Mouse
Host:	Rabbit
Isotype:	IgG
Clonality:	Monoclonal
Immunogen:	A synthetic peptide of human Metabotropic Glutamate Receptor 2
Formulation:	50mM Tris-Glycine(pH 7.4), 0.15M NaCl, 40% Glycerol, 0.01% Sodium azide and 0.05% BSA
Concentration:	lot specific
Purification:	Affinity Purified
Conjugation:	Unconjugated
Storage:	Store at 4°C short term. Aliquot and store at -20°C long term. Avoid freeze/thaw cycles.
Stability:	1 year
Predicted Protein Size:	Calculated MW: 99 kDa; Observed MW: 99 kDa
Gene Name:	glutamate metabotropic receptor 2
Database Link:	<a href="#">Entrez Gene 2912 Human Q14416</a>
Background:	Swiss-Prot Acc.Q14416.G-protein coupled receptor for glutamate. Ligand binding causes a conformation change that triggers signaling via guanine nucleotide-binding proteins (G proteins) and modulates the activity of down-stream effectors, such as adenylate cyclase. Signaling inhibits adenylate cyclase activity. May mediate suppression of neurotransmission or may be involved in synaptogenesis or synaptic stabilization.
Synonyms:	GLUR2; GPRC1B; mGlu2; MGLUR2

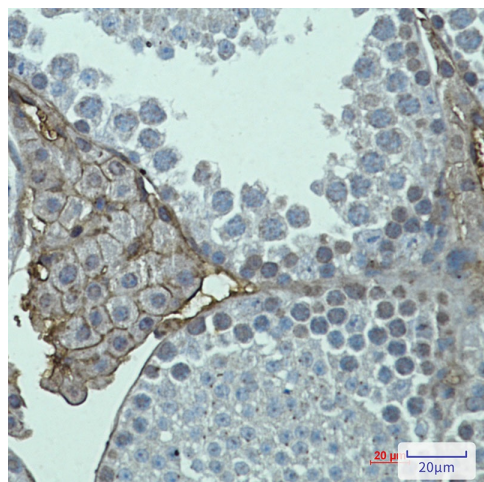


[View online »](#)

## Product images:



Western blot analysis of Metabotropic Glutamate Receptor 2 in K562, HeLa lysates using Metabotropic Glutamate Receptor 2 antibody.



Immunohistochemistry analysis of paraffin-embedded mouse testis using Metabotropic Glutamate Receptor 2 antibody. High-pressure and temperature Sodium Citrate pH 6.0 was used for antigen retrieval.