

Product datasheet for **TA384334**

Metabotropic Glutamate Receptor 2 (GRM2) Rabbit Polyclonal Antibody

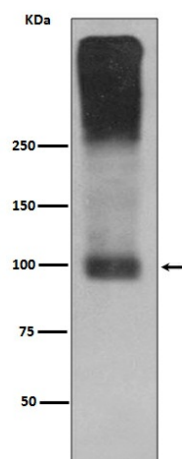
Product data:

Product Type:	Primary Antibodies
Applications:	IF, IHC, WB
Recommended Dilution:	WB: 1/1000 IHC: 1/50-1/200 ICC/IF: 1/50-1/200
Reactivity:	Human, Mouse, Rat
Host:	Rabbit
Isotype:	IgG
Clonality:	Polyclonal
Immunogen:	A synthesized peptide derived from human mGluR2
Formulation:	Rabbit IgG in phosphate buffered saline , pH 7.4, 150mM NaCl, 0.02% sodium azide and 50% glycerol.
Concentration:	lot specific
Purification:	Affinity Chromatography
Conjugation:	Unconjugated
Storage:	Store at 4°C short term. Aliquot and store at -20°C long term. Avoid freeze/thaw cycles.
Stability:	1 year
Predicted Protein Size:	95,200kDa
Gene Name:	glutamate metabotropic receptor 2
Database Link:	Entrez Gene 2912 Human Q14416
Background:	Swiss-Prot Acc.Q14416.G-protein coupled receptor for glutamate. Ligand binding causes a conformation change that triggers signaling via guanine nucleotide-binding proteins (G proteins) and modulates the activity of down-stream effectors, such as adenylate cyclase. Signaling inhibits adenylate cyclase activity. May mediate suppression of neurotransmission or may be involved in synaptogenesis or synaptic stabilization.
Synonyms:	GLUR2; GPRC1B; mGlu2; MGLUR2



[View online »](#)

Product images:



Western blot analysis of mGluR2 in mouse brain lysates using Metabotropic Glutamate Receptor 2 antibody.