

## Product datasheet for **TA384333**

### GRK3 Rabbit Polyclonal Antibody

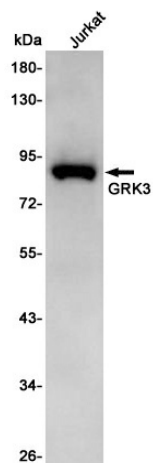
#### Product data:

Product Type:	Primary Antibodies
Applications:	IHC, WB
Recommended Dilution:	WB: 1/1000-1/5000 IHC: 1/20-1/100
Reactivity:	Human
Host:	Rabbit
Isotype:	IgG
Clonality:	Polyclonal
Immunogen:	A synthetic peptide of human GRK3
Formulation:	50mM Tris-Glycine(pH 7.4), 0.15M NaCl, 40% Glycerol, 0.01% Sodium azide and 0.05% BSA
Concentration:	lot specific
Purification:	Affinity Purified
Conjugation:	Unconjugated
Storage:	Store at 4°C short term. Aliquot and store at -20°C long term. Avoid freeze/thaw cycles.
Stability:	1 year
Predicted Protein Size:	Calculated MW: 80 kDa; Observed MW: 80 kDa
Gene Name:	G protein-coupled receptor kinase 3
Database Link:	<a href="#">Entrez Gene 157 Human P35626</a>
Background:	Swiss-Prot Acc.P35626.

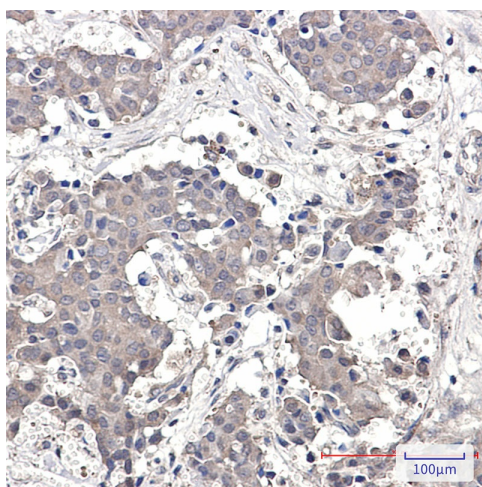


[View online »](#)

## Product images:



Western blot analysis of GRK3 in Jurkat lysates using GRK3 antibody.



Immunohistochemistry analysis of paraffin-embedded Human breast cancer using GRK3 antibody. High-pressure and temperature Sodium Citrate pH 6.0 was used for antigen retrieval.