

## Product datasheet for **TA384331**

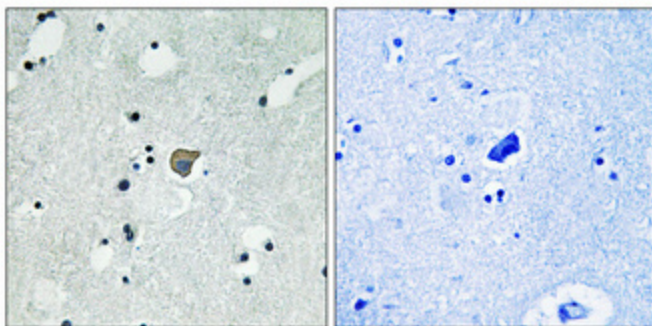
### **NMDAR2A (GRIN2A) Rabbit Polyclonal Antibody**

#### **Product data:**

<b>Product Type:</b>	Primary Antibodies
<b>Applications:</b>	ELISA, IF, IHC
<b>Recommended Dilution:</b>	IHC: 1/100-1/300 IF: 1/200-1/1000 ELISA: 1/10000
<b>Reactivity:</b>	Human, Mouse, Rat
<b>Host:</b>	Rabbit
<b>Isotype:</b>	IgG
<b>Clonality:</b>	Polyclonal
<b>Immunogen:</b>	The antiserum was produced against synthesized peptide derived from human NMDAR2A/B around the phosphorylation site of Tyr1246/1252. AA range:1216-1265 (Phosphorylated)
<b>Formulation:</b>	Liquid in PBS containing 50% glycerol, 0.5% BSA and 0.02% sodium azide, pH 7.3.
<b>Concentration:</b>	lot specific
<b>Purification:</b>	Affinity Purified
<b>Conjugation:</b>	Unconjugated
<b>Storage:</b>	Store at 4°C short term. Aliquot and store at -20°C long term. Avoid freeze/thaw cycles.
<b>Stability:</b>	1 year
<b>Gene Name:</b>	glutamate ionotropic receptor NMDA type subunit 2A
<b>Database Link:</b>	<a href="#">Entrez Gene 2903 Human Q12879</a>
<b>Synonyms:</b>	hNR2A; NMDAR2A; NR2A; OTTHUMP00000160135; OTTHUMP00000174531



[View online »](#)

**Product images:**

Immunohistochemistry analysis of paraffin-embedded Human brain using Phospho-NMDAR2A/2B (Tyr1246/Tyr1252) antibody. High-pressure and temperature Tris-EDTA pH 8.0 was used for antigen retrieval. Sample with blocking peptide on the right.