

Product datasheet for **TA384328**

Ionotropic Glutamate receptor 2 (GRIA2) Rabbit Polyclonal Antibody

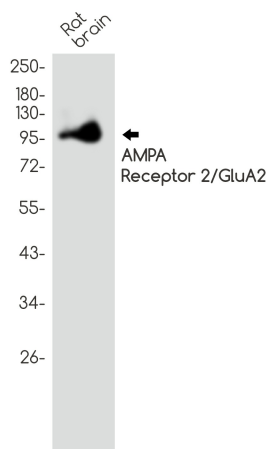
Product data:

Product Type:	Primary Antibodies
Applications:	IF, IHC, IP, WB
Recommended Dilution:	WB: 1/1000 IHC: 1/50 ICC/IF: 1/100 IP: 1/20
Reactivity:	Mouse, Rat
Host:	Rabbit
Isotype:	IgG
Clonality:	Polyclonal
Immunogen:	Recombinant protein of human Glutamate receptor 2
Formulation:	50mM Tris-Glycine(pH 7.4), 0.15M NaCl, 40% Glycerol, 0.01% Sodium azide and 0.05% BSA
Concentration:	lot specific
Purification:	Affinity Purified
Conjugation:	Unconjugated
Storage:	Store at 4°C short term. Aliquot and store at -20°C long term. Avoid freeze/thaw cycles.
Stability:	1 year
Predicted Protein Size:	Calculated MW: 99 kDa; Observed MW: 99 kDa
Gene Name:	glutamate ionotropic receptor AMPA type subunit 2
Database Link:	P42262
Background:	Swiss-Prot Acc.P42262.
Synonyms:	GluA2; gluD-B; GluR-K2; GLUR2; GluR2; GLURB; HBGR2

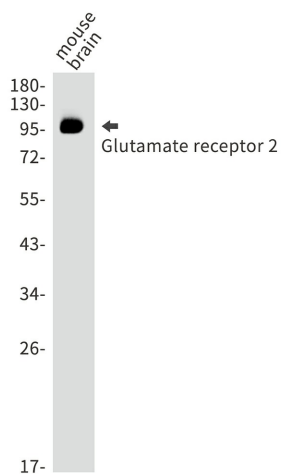


[View online »](#)

Product images:



Western blot analysis of AMPA Receptor 2/GluA2 in rat brain lysates using AMPA Receptor 2 antibody.



Western blot analysis of Glutamate receptor 2 in mouse brain lysates using Glutamate receptor 2 antibody.