

Product datasheet for **TA384327**

Ionotropic Glutamate receptor 2 (GRIA2) Rabbit Polyclonal Antibody

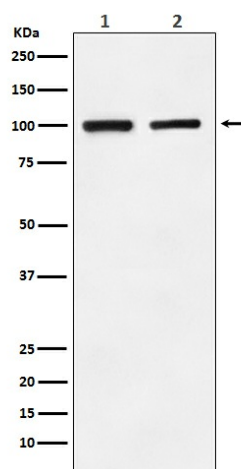
Product data:

Product Type:	Primary Antibodies
Applications:	IF, IP, WB
Recommended Dilution:	WB: 1/500-1/2000 ICC/IF: 1/50-1/200 IP: 1/50
Reactivity:	Human, Mouse, Rat
Host:	Rabbit
Isotype:	IgG
Clonality:	Polyclonal
Immunogen:	A synthesized peptide derived from human GluR2
Formulation:	Rabbit IgG in phosphate buffered saline , pH 7.4, 150mM NaCl, 0.02% sodium azide and 50% glycerol.
Concentration:	lot specific
Purification:	Affinity Chromatography
Conjugation:	Unconjugated
Storage:	Store at 4°C short term. Aliquot and store at -20°C long term. Avoid freeze/thaw cycles.
Stability:	1 year
Predicted Protein Size:	98kDa
Gene Name:	glutamate ionotropic receptor AMPA type subunit 2
Database Link:	Entrez Gene 2891 Human P42262
Background:	Swiss-Prot Acc.P42262.Ionotropic glutamate receptor. L-glutamate acts as an excitatory neurotransmitter at many synapses in the central nervous system. Binding of the excitatory neurotransmitter L-glutamate induces a conformation change, leading to the opening of the cation channel, and thereby converts the chemical signal to an electrical impulse. The receptor then desensitizes rapidly and enters a transient inactive state, characterized by the presence of bound agonist.
Synonyms:	GluA2; gluR-B; GluR-K2; GLUR2; GluR2; GLURB; HBGR2



[View online »](#)

Product images:



Western blot analysis of GluR2 in (1) Human fetal brain lysates; (2) mouse brain lysates using Ionotropic Glutamate Receptor 2 antibody.