

Product datasheet for **TA384325**

GRB2 Rabbit Polyclonal Antibody

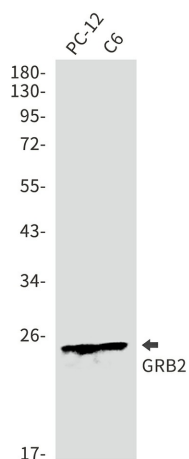
Product data:

Product Type:	Primary Antibodies
Applications:	IHC, IP, WB
Recommended Dilution:	WB: 1/2000 IHC: 1/50 IP: 1/20
Reactivity:	Human, Mouse, Rat
Host:	Rabbit
Isotype:	IgG
Clonality:	Polyclonal
Immunogen:	A synthetic peptide of human GRB2
Formulation:	50mM Tris-Glycine(pH 7.4), 0.15M NaCl, 40% Glycerol, 0.01% Sodium azide and 0.05% BSA
Concentration:	lot specific
Purification:	Affinity Purified
Conjugation:	Unconjugated
Storage:	Store at 4°C short term. Aliquot and store at -20°C long term. Avoid freeze/thaw cycles.
Stability:	1 year
Predicted Protein Size:	Calculated MW: 25 kDa; Observed MW: 25 kDa
Gene Name:	growth factor receptor bound protein 2
Database Link:	Entrez Gene 2885 Human P62993
Background:	Swiss-Prot Acc.P62993.
Synonyms:	AA408164; Ash; MGC108668

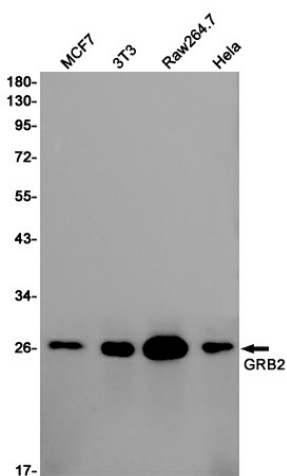


[View online »](#)

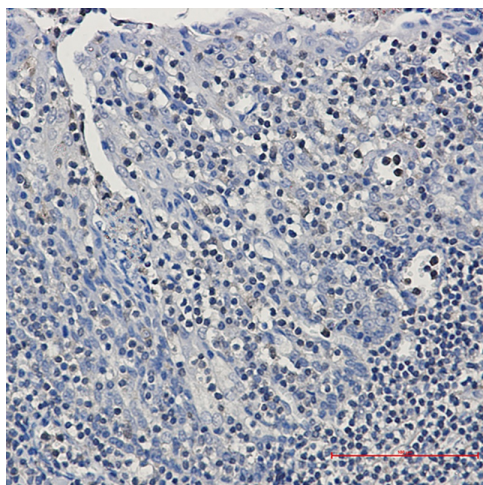
Product images:



Western blot analysis of GRB2 in PC-12, C6 lysates using GRB2 antibody.



Western blot analysis of GRB2 in MCF-7, 3T3, Raw264.7, HeLa lysates using GRB2 antibody.



Immunohistochemistry analysis of paraffin-embedded Human tonsil using GRB2 antibody. High-pressure and temperature Sodium Citrate pH 6.0 was used for antigen retrieval.