

Product datasheet for **TA384323**

Glutathione Peroxidase 1 (GPX1) Rabbit Polyclonal Antibody

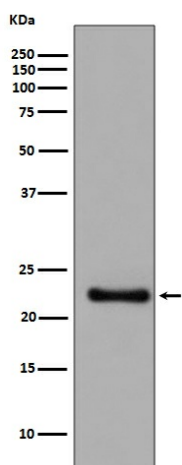
Product data:

Product Type:	Primary Antibodies
Applications:	IF, IHC, IP, WB
Recommended Dilution:	WB: 1/500-1/2000 IHC: 1/50-1/200 ICC/IF: 1/50-1/200 IP: 1/50
Reactivity:	Human, Rat
Host:	Rabbit
Isotype:	IgG
Clonality:	Polyclonal
Immunogen:	A synthesized peptide derived from human GPX1
Formulation:	Rabbit IgG in phosphate buffered saline , pH 7.4, 150mM NaCl, 0.02% sodium azide and 50% glycerol.
Concentration:	lot specific
Purification:	Affinity Chromatography
Conjugation:	Unconjugated
Storage:	Store at 4°C short term. Aliquot and store at -20°C long term. Avoid freeze/thaw cycles.
Stability:	1 year
Predicted Protein Size:	22kDa
Gene Name:	glutathione peroxidase 1
Database Link:	Entrez Gene 2876 Human P07203
Background:	Swiss-Prot Acc.P07203.Glutathione peroxidase 1 (GPX1) is a cytosolic selenoprotein which reduces hydrogen peroxide to water. GPX1 is the most abundant and ubiquitous among the five GPX isoforms identified so far. It is an important component in the anti-oxidative defense in cells and is associated with a variety of disease conditions, such as colon cancer, coronary artery disease and insulin resistance.
Synonyms:	GPXD; GSHPX1



[View online »](#)

Product images:



Western blot analysis of GPX1 in SH SY5Y lysates using Glutathione Peroxidase 1 antibody.