

## Product datasheet for **TA384322**

### GPR75 Rabbit Polyclonal Antibody

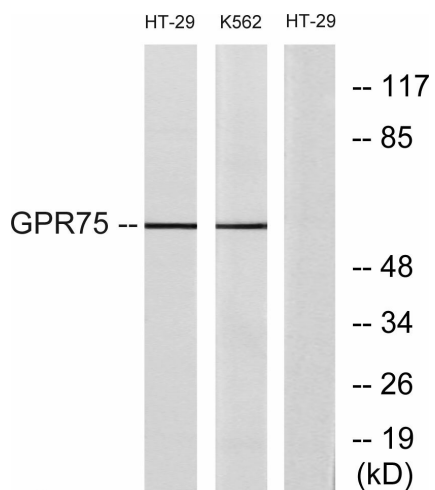
#### Product data:

Product Type:	Primary Antibodies
Applications:	ELISA, IF, WB
Recommended Dilution:	WB: 1/500 ICC/IF: 1/200 ELISA: 1/5000
Reactivity:	Human, Mouse
Host:	Rabbit
Isotype:	IgG
Clonality:	Polyclonal
Immunogen:	The antiserum was produced against synthesized peptide derived from human GPR75. AA range:381-430
Formulation:	Liquid in PBS containing 50% glycerol, 0.5% BSA and 0.02% sodium azide, pH 7.3.
Concentration:	lot specific
Purification:	Affinity Purified
Conjugation:	Unconjugated
Storage:	Store at 4°C short term. Aliquot and store at -20°C long term. Avoid freeze/thaw cycles.
Stability:	1 year
Predicted Protein Size:	59 kDa
Gene Name:	G protein-coupled receptor 75
Database Link:	<a href="#">Entrez Gene 10936 Human O95800</a>
Background:	Swiss-Prot Acc.O95800.
Synonyms:	RGD1566385

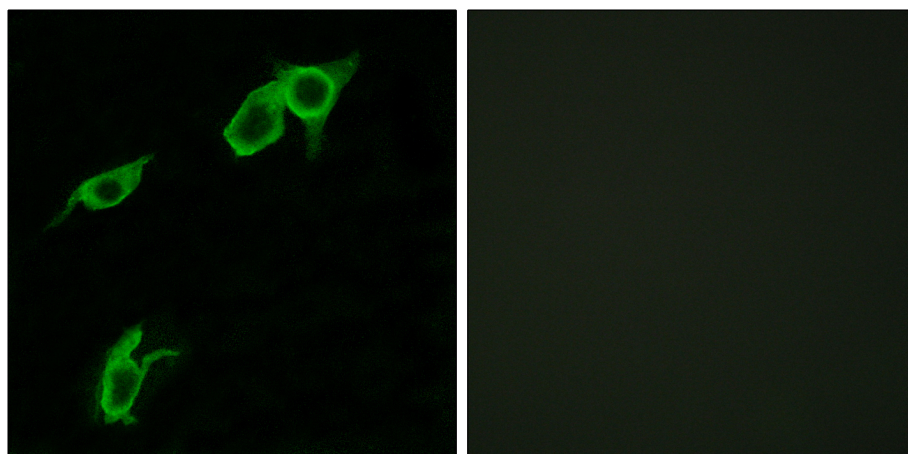


[View online »](#)

**Product images:**



Western blot analysis of GPR75 in HT-29 and K562 lysates using GPR75 antibody. The lane on the right is blocked with the synthesized peptide.



Immunofluorescence analysis of GPR75 in LOVO using GPR75 antibody. The picture on the right is blocked using the synthesized peptide.