

## Product datasheet for **TA384321M**

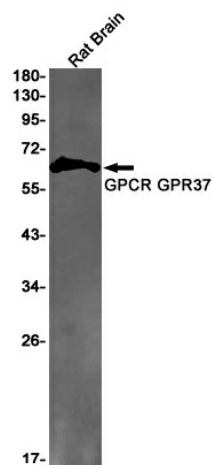
### GPR37 Rabbit Monoclonal Antibody [Clone ID: R02-9I6]

#### Product data:

Product Type:	Primary Antibodies
Clone Name:	R02-9I6
Applications:	WB
Recommended Dilution:	WB: 1/1000
Reactivity:	Rat
Host:	Rabbit
Isotype:	IgG
Clonality:	Monoclonal
Immunogen:	A synthetic peptide of human GPCR GPR37
Formulation:	50mM Tris-Glycine(pH 7.4), 0.15M NaCl, 40% Glycerol, 0.01% Sodium azide and 0.05% BSA
Concentration:	lot specific
Purification:	Affinity Purified
Conjugation:	Unconjugated
Storage:	Store at 4°C short term. Aliquot and store at -20°C long term. Avoid freeze/thaw cycles.
Stability:	1 year
Predicted Protein Size:	Calculated MW: 67 kDa; Observed MW: 67 kDa
Gene Name:	G protein-coupled receptor 37
Database Link:	<a href="#">O15354</a>
Background:	Swiss-Prot Acc.O15354.Receptor for the neuroprotective and glioprotective factor prosaposin. Ligand binding induces endocytosis, followed by an ERK phosphorylation cascade.
Synonyms:	AI848630; Ednrbl; Pael-R


[View online »](#)

## Product images:



Western blot detection of GPCR GPR37 in Rat Brain lysates using GPCR GPR37 Rabbit mAb(1:1000 diluted). Predicted band size: 67kDa. Observed band size: 67kDa.