

## Product datasheet for **TA384320S**

### GPR182 Rabbit Monoclonal Antibody [Clone ID: R02-3E6]

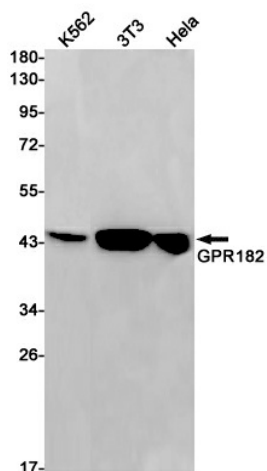
#### Product data:

Product Type:	Primary Antibodies
Clone Name:	R02-3E6
Applications:	WB
Recommended Dilution:	WB: 1/1000
Reactivity:	Human, Mouse, Rat
Host:	Rabbit
Isotype:	IgG
Clonality:	Monoclonal
Immunogen:	Recombinant protein of human GPR182
Formulation:	50mM Tris-Glycine(pH 7.4), 0.15M NaCl, 40% Glycerol, 0.01% Sodium azide and 0.05% BSA
Concentration:	lot specific
Purification:	Affinity Purified
Conjugation:	Unconjugated
Storage:	Store at 4°C short term. Aliquot and store at -20°C long term. Avoid freeze/thaw cycles.
Stability:	1 year
Predicted Protein Size:	Calculated MW: 45 kDa; Observed MW: 45 kDa
Gene Name:	G protein-coupled receptor 182
Database Link:	<a href="#">Entrez Gene 11318 Human O15218</a>
Background:	Swiss-Prot Acc.O15218.Orphan receptor.
Synonyms:	7TMR; ADMR; AM-R; AMR; G10D; gamrh; hrhAMR



[View online »](#)

## Product images:



Western blot detection of GPR182 in K562,C6,3T3,HeLa cell lysates using GPR182 Rabbit mAb(1:1000 diluted).Predicted band size:45kDa.Observed band size:45kDa.