

Product datasheet for **TA384319**

GPR158 Rabbit Polyclonal Antibody

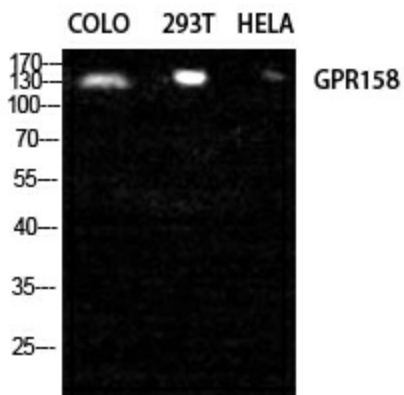
Product data:

Product Type:	Primary Antibodies
Applications:	ELISA, IF, IHC, WB
Recommended Dilution:	WB: 1/500-1/2000 IHC: 1/100-1/300 IF: 1/200-1/1000 ELISA: 1/5000
Reactivity:	Human, Mouse
Host:	Rabbit
Isotype:	IgG
Clonality:	Polyclonal
Immunogen:	The antiserum was produced against synthesized peptide derived from human GPR158. AA range:1-50
Formulation:	Liquid in PBS containing 50% glycerol, 0.5% BSA and 0.02% sodium azide, pH 7.3.
Concentration:	lot specific
Purification:	Affinity Chromatography
Conjugation:	Unconjugated
Storage:	Store at 4°C short term. Aliquot and store at -20°C long term. Avoid freeze/thaw cycles.
Stability:	1 year
Predicted Protein Size:	Observed MW (kDa):150
Database Link:	Q5T848
Background:	Swiss-Prot Acc.Q5T848.Orphan receptor.

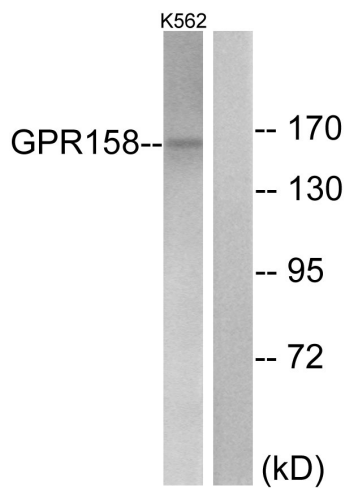


[View online »](#)

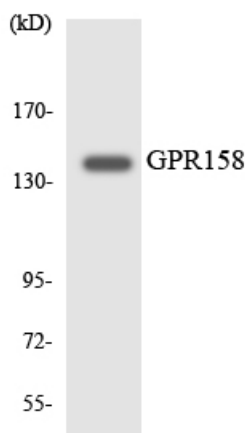
Product images:



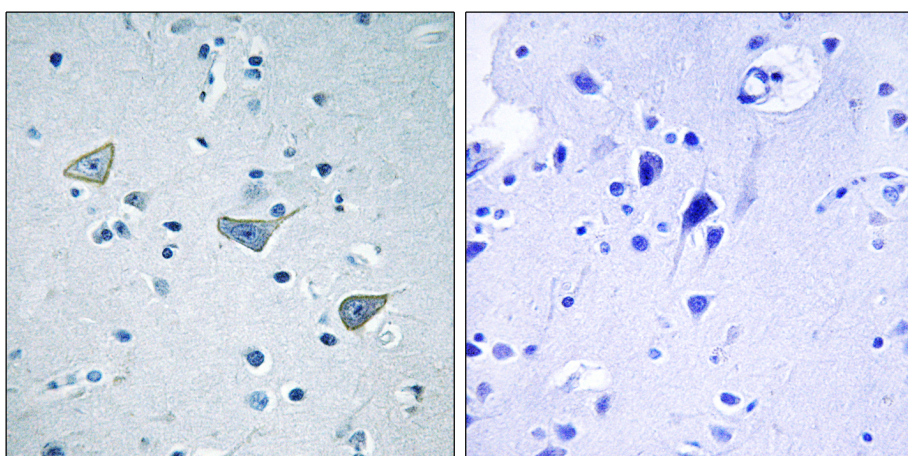
Western blot analysis of GPR158 in COLO, 293T, HELA lysates using GPR158 antibody.



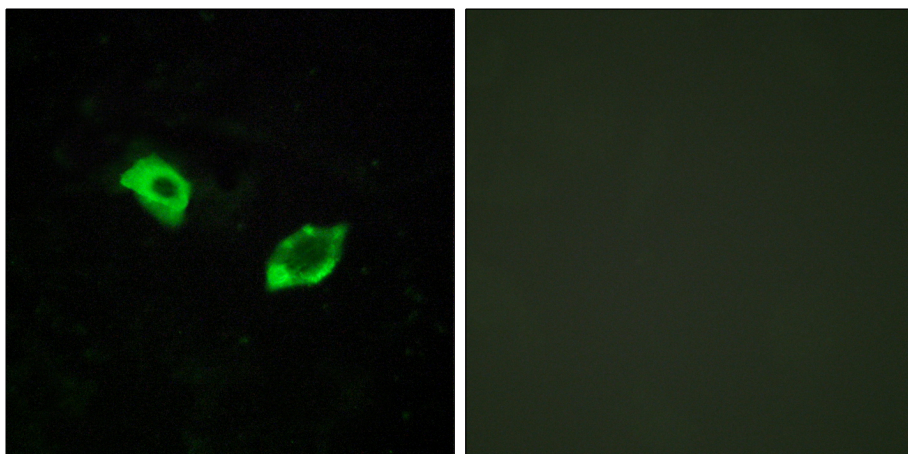
Western blot analysis of GPR158 in K562 lysates using GPR158 antibody. The lane on the right is blocked with the synthesized peptide.



Western blot analysis of GPR158 in HeLa using GPR158 antibody.



Immunohistochemistry analysis of paraffin-embedded Human brain tissue using GPR158 antibody. High-pressure and temperature Sodium Citrate pH 6.0 was used for antigen retrieval. Sample with blocking peptide on the right.



Immunofluorescence analysis of GPR158 in HUVEC using GPR158 antibody. The picture on the right is blocked using the synthesized peptide.