

Product datasheet for **TA384318**

GPR132 Rabbit Polyclonal Antibody

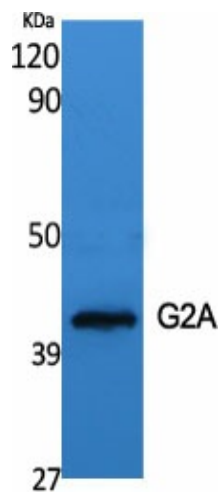
Product data:

Product Type:	Primary Antibodies
Applications:	ELISA, IF, WB
Recommended Dilution:	WB: 1/500-1/2000 IF: 1/200-1/1000 ELISA: 1/5000
Reactivity:	Human, Mouse, Monkey
Host:	Rabbit
Isotype:	IgG
Clonality:	Polyclonal
Immunogen:	The antiserum was produced against synthesized peptide derived from human GPR132. AA range:293-342
Formulation:	Liquid in PBS containing 50% glycerol, 0.5% BSA and 0.02% sodium azide, pH 7.3.
Concentration:	lot specific
Purification:	Affinity Purified
Conjugation:	Unconjugated
Storage:	Store at 4°C short term. Aliquot and store at -20°C long term. Avoid freeze/thaw cycles.
Stability:	1 year
Predicted Protein Size:	Observed MW (kDa):42
Database Link:	Q9UNW8
Background:	Swiss-Prot Acc.Q9UNW8.

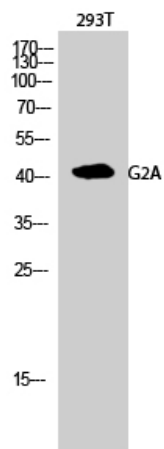


[View online »](#)

Product images:



Western blot analysis of GPR132 in various lysates using GPR132 antibody.



Western blot analysis of GPR132 in 293T lysates using G2A antibody.