

Product datasheet for **TA384317M**

GPD2 Rabbit Monoclonal Antibody [Clone ID: R02-5B9]

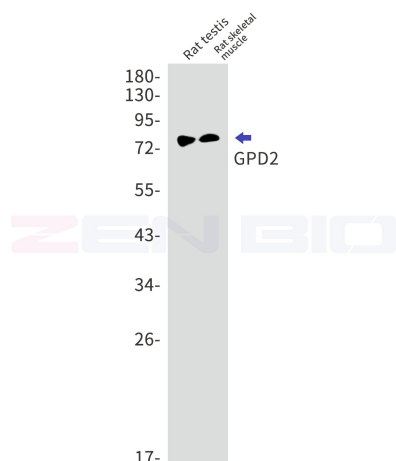
Product data:

Product Type:	Primary Antibodies
Clone Name:	R02-5B9
Applications:	IP, WB
Recommended Dilution:	WB: 1/1000 IP: 1/20
Reactivity:	Human, Mouse, Rat
Host:	Rabbit
Isotype:	IgG
Clonality:	Monoclonal
Immunogen:	A synthetic peptide of human GPD2
Formulation:	50mM Tris-Glycine(pH 7.4), 0.15M NaCl, 40% Glycerol, 0.01% Sodium azide and 0.05% BSA
Concentration:	lot specific
Purification:	Affinity Purified
Conjugation:	Unconjugated
Storage:	Store at 4°C short term. Aliquot and store at -20°C long term. Avoid freeze/thaw cycles.
Stability:	1 year
Predicted Protein Size:	Calculated MW: 81 kDa; Observed MW: 81 kDa
Gene Name:	glycerol-3-phosphate dehydrogenase 2
Database Link:	Entrez Gene 2820 Human P43304
Background:	Swiss-Prot Acc.P43304.Glycerol-3-phosphate dehydrogenase, mitochondrial
Synonyms:	AA408484; AI448216; AU021455; AW494132; Gdm1; Gpd-m; GPDH; Gpdh-m; mtGPDH; TISP38

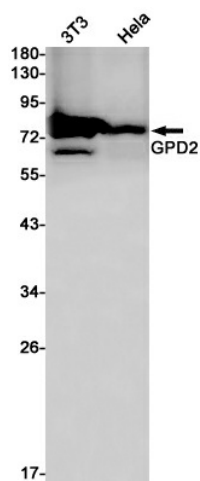


[View online »](#)

Product images:



Western blot detection of GPD2 in Rat testis, Rat skeletal muscle lysates using GPD2 antibody. Predicted band size: 81 kDa. Observed band size: 81 kDa.



Western blot detection of GPD2 in K562, HeLa cell lysates using GPD2 Rabbit mAb (1:1000 diluted). Predicted band size: 81 kDa. Observed band size: 81 kDa.