

Product datasheet for **TA384310M**

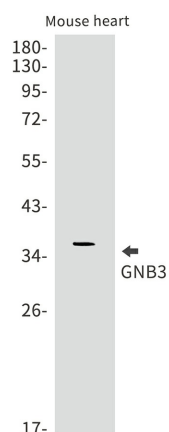
GNB3 Rabbit Monoclonal Antibody [Clone ID: R01-9F3]

Product data:

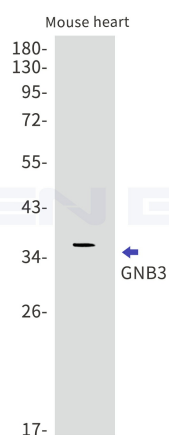
Product Type:	Primary Antibodies
Clone Name:	R01-9F3
Applications:	IHC, WB
Recommended Dilution:	WB: 1/1000 IHC: 1/20
Reactivity:	Human, Mouse, Rat
Host:	Rabbit
Isotype:	IgG
Clonality:	Monoclonal
Immunogen:	A synthetic peptide of human GNB3
Formulation:	50mM Tris-Glycine(pH 7.4), 0.15M NaCl, 40% Glycerol, 0.01% Sodium azide and 0.05% BSA
Concentration:	lot specific
Purification:	Affinity Purified
Conjugation:	Unconjugated
Storage:	Store at 4°C short term. Aliquot and store at -20°C long term. Avoid freeze/thaw cycles.
Stability:	1 year
Predicted Protein Size:	Calculated MW: 37 kDa; Observed MW: 37 kDa
Gene Name:	G protein subunit beta 3
Database Link:	Entrez Gene 2784 Human P16520
Background:	Swiss-Prot Acc.P16520.Guanine nucleotide-binding proteins (G proteins) are involved as a modulator or transducer in various transmembrane signaling systems. The beta and gamma chains are required for the GTPase activity, for replacement of GDP by GTP, and for G protein-effector interaction.
Synonyms:	GNB3

[View online »](#)

Product images:



Western blot analysis of GNB3 in mouse heart lysates using GNB3 antibody.



Western blot detection of GNB3 in Mouse heart lysates using GNB3 antibody. Predicted band size: 37kDa. Observed band size: 37kDa.