

Product datasheet for **TA384309S**

GNB2 Rabbit Monoclonal Antibody [Clone ID: R03-8J2]

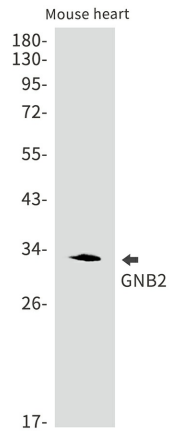
Product data:

Product Type:	Primary Antibodies
Clone Name:	R03-8J2
Applications:	IF, IP, WB
Recommended Dilution:	WB: 1/1000 ICC/IF: 1/20 IP: 1/20
Reactivity:	Human, Mouse, Rat
Host:	Rabbit
Isotype:	IgG
Clonality:	Monoclonal
Immunogen:	A synthetic peptide of human GNB2
Formulation:	50mM Tris-Glycine(pH 7.4), 0.15M NaCl, 40% Glycerol, 0.01% Sodium azide and 0.05% BSA
Concentration:	lot specific
Purification:	Affinity Purified
Conjugation:	Unconjugated
Storage:	Store at 4°C short term. Aliquot and store at -20°C long term. Avoid freeze/thaw cycles.
Stability:	1 year
Predicted Protein Size:	Calculated MW: 37 kDa; Observed MW: 32 kDa
Gene Name:	G protein subunit beta 2
Database Link:	Entrez Gene 2783 Human P62879
Background:	Swiss-Prot Acc.P62879.Guanine nucleotide-binding proteins (G proteins) are involved as a modulator or transducer in various transmembrane signaling systems. The beta and gamma chains are required for the GTPase activity, for replacement of GDP by GTP, and for G protein-effector interaction.
Synonyms:	OTTHUMP00000174601; OTTHUMP00000174602

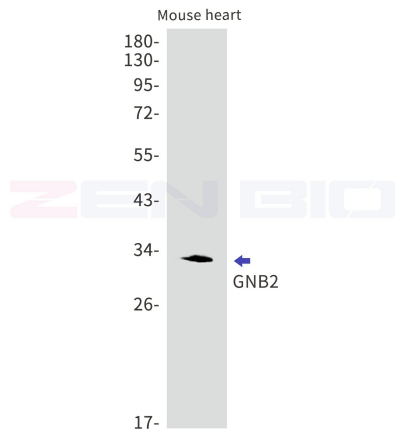


[View online »](#)

Product images:



Western blot analysis of GNB2 in mouse heart lysates using GNB2 antibody.



Western blot detection of GNB2 in Mouse heart lysates using GNB2 antibody. Predicted band size: 37kDa. Observed band size: 32kDa.