

## Product datasheet for **TA384307**

### Geminin (GMNN) Rabbit Polyclonal Antibody

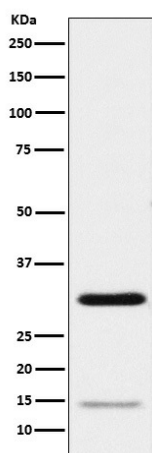
#### Product data:

Product Type:	Primary Antibodies
Applications:	IF, IHC, WB
Recommended Dilution:	WB: 1/500-1/1000 IHC: 1/50-1/200 ICC/IF: 1/50-1/200
Reactivity:	Human
Host:	Rabbit
Isotype:	IgG
Clonality:	Polyclonal
Immunogen:	A synthesized peptide derived from human Geminin
Formulation:	Rabbit IgG in phosphate buffered saline , pH 7.4, 150mM NaCl, 0.02% sodium azide and 50% glycerol.
Concentration:	lot specific
Purification:	Affinity Chromatography
Conjugation:	Unconjugated
Storage:	Store at 4°C short term. Aliquot and store at -20°C long term. Avoid freeze/thaw cycles.
Stability:	1 year
Predicted Protein Size:	30kDa
Gene Name:	geminin, DNA replication inhibitor
Database Link:	<a href="#">Entrez Gene 51053 Human O75496</a>
Background:	Swiss-Prot Acc.O75496.Inhibits DNA replication by preventing the incorporation of MCM complex into prereplication complex (pre-RC). It is degraded during the mitotic phase of the cell cycle. Its destruction at the metaphase-anaphase transition permits replication in the succeeding cell cycle.
Synonyms:	Gem; geminin; RP3-369A17.3



[View online »](#)

## Product images:



Western blot analysis of Geminin in HeLa lysates using Geminin antibody.