

## Product datasheet for **TA384306S**

### Glutaminase (GLS) Rabbit Polyclonal Antibody

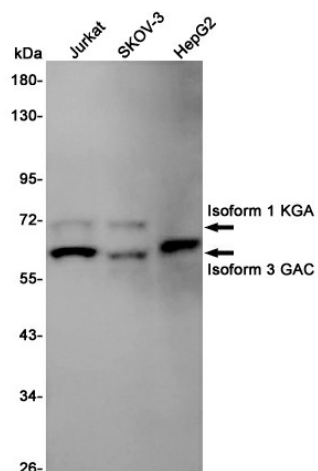
#### Product data:

Product Type:	Primary Antibodies
Applications:	FC, IF, IHC, WB
Recommended Dilution:	WB: 1/2000 IHC: 1/50 ICC/IF: 1/50 FC: 1/50
Reactivity:	Human
Host:	Rabbit
Isotype:	IgG
Clonality:	Polyclonal
Immunogen:	A synthetic peptide of human Glutaminase
Formulation:	50mM Tris-Glycine(pH 7.4), 0.15M NaCl, 40% Glycerol, 0.01% Sodium azide and 0.05% BSA
Concentration:	lot specific
Purification:	Affinity Purified
Conjugation:	Unconjugated
Storage:	Store at 4°C short term. Aliquot and store at -20°C long term. Avoid freeze/thaw cycles.
Stability:	1 year
Predicted Protein Size:	Calculated MW: 73 kDa; Observed MW: 73,65 kDa
Gene Name:	glutaminase
Database Link:	<a href="#">Entrez Gene 2744 Human O94925</a>
Background:	Swiss-Prot Acc.O94925.
Synonyms:	AAD20; DKFZp686O15119; FLJ10358; GLS1; glutaminase; K-glutaminase; KIAA0838

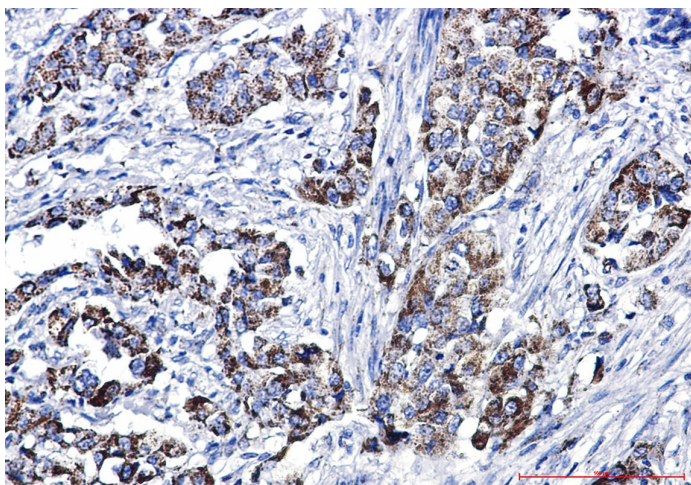


[View online »](#)

## Product images:



Western blot analysis of Glutaminase1/GLS1 in Jurkat, SKOV-3, HepG2 lysates using Glutaminase antibody.



Immunohistochemistry analysis of paraffin-embedded Human lung cancer using Glutaminase antibody. High-pressure and temperature Sodium Citrate pH 6.0 was used for antigen retrieval.