

Product datasheet for **TA384305S**

GLB1 Rabbit Monoclonal Antibody [Clone ID: R01-3G1]

Product data:

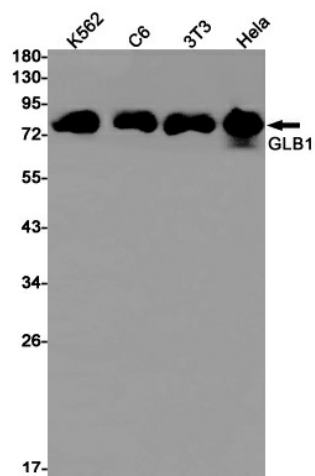
Product Type:	Primary Antibodies
Clone Name:	R01-3G1
Applications:	WB
Recommended Dilution:	WB: 1/2000-1/10000
Reactivity:	Human, Mouse, Rat
Host:	Rabbit
Isotype:	IgG
Clonality:	Monoclonal
Immunogen:	A synthetic peptide of human GLB1
Formulation:	50mM Tris-Glycine(pH 7.4), 0.15M NaCl, 40% Glycerol, 0.01% Sodium azide and 0.05% BSA
Concentration:	lot specific
Purification:	Affinity Purified
Conjugation:	Unconjugated
Storage:	Store at 4°C short term. Aliquot and store at -20°C long term. Avoid freeze/thaw cycles.
Stability:	1 year
Predicted Protein Size:	Calculated MW: 76 kDa; Observed MW: 80 kDa
Gene Name:	galactosidase beta 1
Database Link:	Entrez Gene 2720 Human P16278
Background:	Swiss-Prot Acc.P16278.Cleaves beta-linked terminal galactosyl residues from gangliosides, glycoproteins, and glycosaminoglycans.Isoform 2 has no beta-galactosidase catalytic activity, but plays functional roles in the formation of extracellular elastic fibers (elastogenesis) and in the development of connective tissue. Seems to be identical to the elastin-binding protein (EBP), a major component of the non-integrin cell surface receptor expressed on fibroblasts, smooth muscle cells, chondroblasts, leukocytes, and certain cancer cell types. In elastin producing cells, associates with tropoelastin intracellularly and functions as a recycling molecular chaperone which facilitates the secretions of tropoelastin and its assembly into elastic fibers.



[View online »](#)

Synonyms: EBP; ELNR1; Lactase

Product images:



Western blot analysis of GLB1 in K562, C6, 3T3, HeLa lysates using GLB1 antibody.