

Product datasheet for **TA384304**

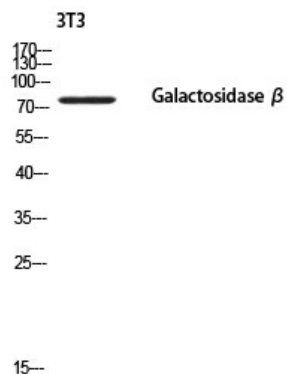
GLB1 Rabbit Polyclonal Antibody

Product data:

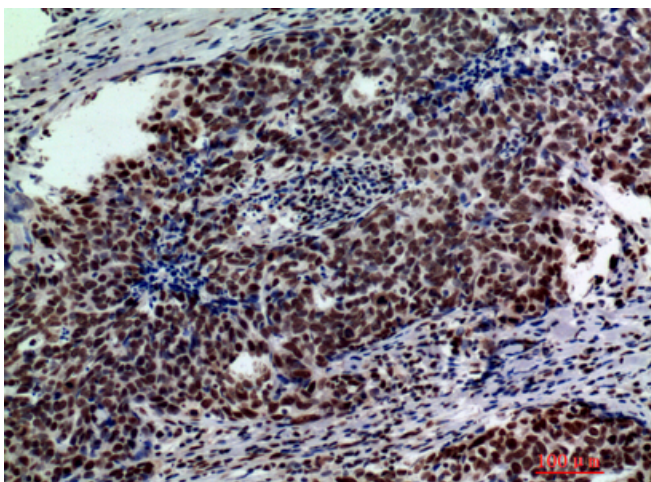
Product Type:	Primary Antibodies
Applications:	ELISA, IHC, WB
Recommended Dilution:	WB: 1/500-1/2000 IHC-p: 1/100-1/300 ELISA: 1/10000
Reactivity:	Human
Host:	Rabbit
Isotype:	IgG
Clonality:	Polyclonal
Immunogen:	Synthesized peptide derived from the Internal region of human Galactosidase β .
Formulation:	Liquid in PBS containing 50% glycerol, 0.5% BSA and 0.02% sodium azide, pH 7.3.
Concentration:	lot specific
Purification:	Affinity Purified
Conjugation:	Unconjugated
Storage:	Store at 4°C short term. Aliquot and store at -20°C long term. Avoid freeze/thaw cycles.
Stability:	1 year
Predicted Protein Size:	Observed MW (kDa):76
Gene Name:	galactosidase beta 1
Database Link:	Entrez Gene 2720 Human P16278
Background:	Swiss-Prot Acc.P16278.
Synonyms:	EBP; ELNR1; Lactase



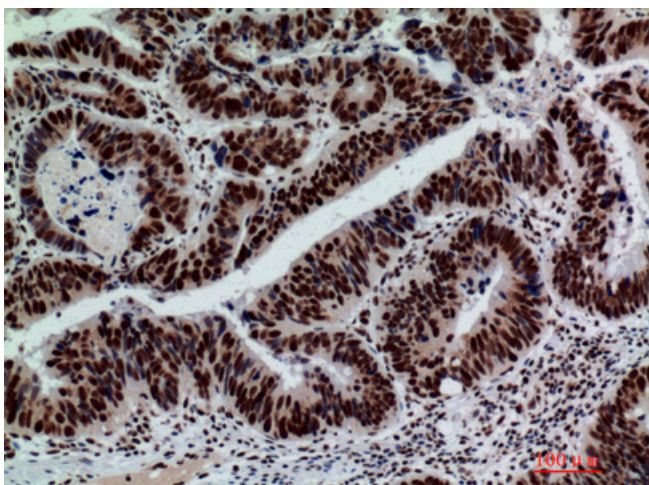
[View online »](#)

Product images:

Western blot analysis of GLB1 in 3T3 lysates using GLB1 antibody.



Immunohistochemistry analysis of paraffin-embedded Human breast cancer using GLB1 antibody. High-pressure and temperature Sodium Citrate pH 6.0 was used for antigen retrieval.



Immunohistochemistry analysis of paraffin-embedded Human colontcancer using GLB1 antibody. High-pressure and temperature Sodium Citrate pH 6.0 was used for antigen retrieval.