

Product datasheet for **TA384303S**

Galactosidase alpha (GLA) Rabbit Monoclonal Antibody [Clone ID: R01-9J4]

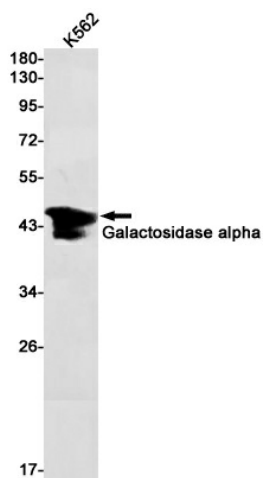
Product data:

Product Type:	Primary Antibodies
Clone Name:	R01-9J4
Applications:	IHC, IP, WB
Recommended Dilution:	WB: 1/1000 IHC: 1/20 IP: 1/20
Reactivity:	Human
Host:	Rabbit
Isotype:	IgG
Clonality:	Monoclonal
Immunogen:	A synthetic peptide of human Galactosidase alpha
Formulation:	50mM Tris-Glycine(pH 7.4), 0.15M NaCl, 40% Glycerol, 0.01% Sodium azide and 0.05% BSA
Concentration:	lot specific
Purification:	Affinity Purified
Conjugation:	Unconjugated
Storage:	Store at 4°C short term. Aliquot and store at -20°C long term. Avoid freeze/thaw cycles.
Stability:	1 year
Predicted Protein Size:	Calculated MW: 49 kDa; Observed MW: 49 kDa
Gene Name:	galactosidase alpha
Database Link:	Entrez Gene 2717 Human P06280
Background:	Swiss-Prot Acc.P06280.Alpha-galactosidase A
Synonyms:	Agalsidase; GALA; melibiase

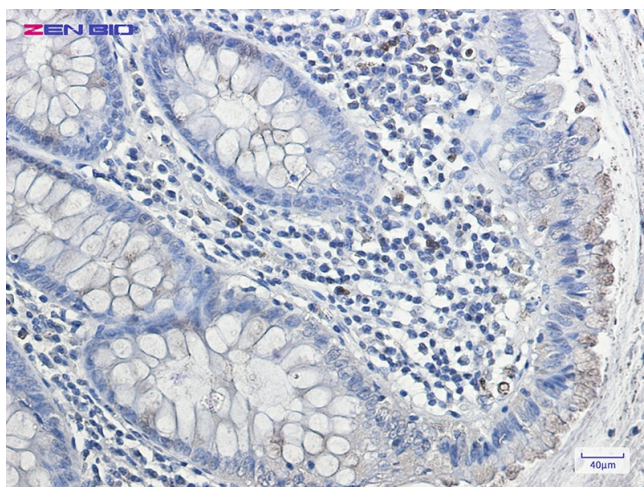


[View online »](#)

Product images:



Western blot detection of Galactosidase alpha in K562 cell lysates using Galactosidase alpha Rabbit mAb(1:1000 diluted). Predicted band size:49kDa. Observed band size:49kDa.



Immunohistochemistry of Galactosidase alpha in paraffin-embedded Human colon cancer tissue using Galactosidase alpha Rabbit mAb at dilution 1/20