

Product datasheet for **TA384303**

Galactosidase alpha (GLA) Rabbit Monoclonal Antibody [Clone ID: R01-9J4]

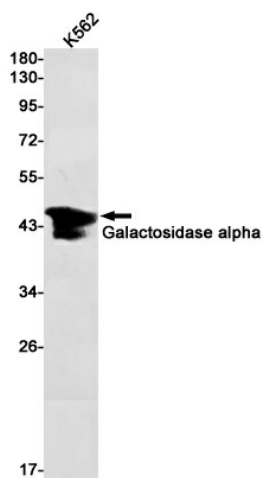
Product data:

| | |
|-------------------------|--|
| Product Type: | Primary Antibodies |
| Clone Name: | R01-9J4 |
| Applications: | IHC, IP, WB |
| Recommended Dilution: | WB: 1/1000 IHC: 1/20 IP: 1/20 |
| Reactivity: | Human |
| Host: | Rabbit |
| Isotype: | IgG |
| Clonality: | Monoclonal |
| Immunogen: | A synthetic peptide of human Galactosidase alpha |
| Formulation: | 50mM Tris-Glycine(pH 7.4), 0.15M NaCl, 40% Glycerol, 0.01% Sodium azide and 0.05% BSA |
| Concentration: | lot specific |
| Purification: | Affinity Purified |
| Conjugation: | Unconjugated |
| Storage: | Store at 4°C short term. Aliquot and store at -20°C long term. Avoid freeze/thaw cycles. |
| Stability: | 1 year |
| Predicted Protein Size: | Calculated MW: 49 kDa; Observed MW: 49 kDa |
| Gene Name: | galactosidase alpha |
| Database Link: | Entrez Gene 2717 Human P06280 |
| Background: | Swiss-Prot Acc.P06280.Alpha-galactosidase A |
| Synonyms: | Agalsidase; GALA; melibiase |

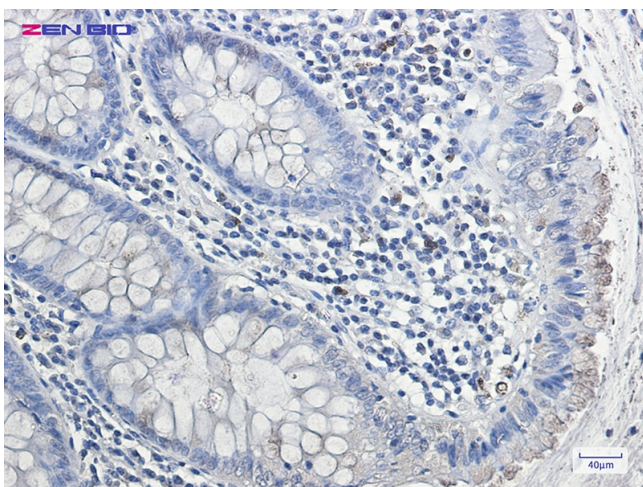


[View online »](#)

Product images:



Western blot detection of Galactosidase alpha in K562 cell lysates using Galactosidase alpha Rabbit mAb(1:1000 diluted). Predicted band size:49kDa. Observed band size:49kDa.



Immunohistochemistry of Galactosidase alpha in paraffin-embedded Human colon cancer tissue using Galactosidase alpha Rabbit mAb at dilution 1/20