

Product datasheet for **TA384302S**

GJA1 Rabbit Polyclonal Antibody

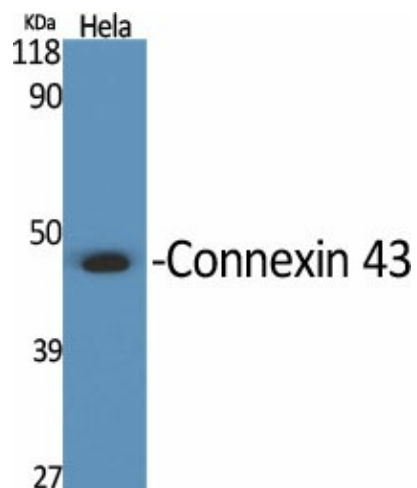
Product data:

Product Type:	Primary Antibodies
Applications:	ELISA, IF, IHC, WB
Recommended Dilution:	WB: 1/500-1/2000 IHC: 1/100-1/300 IF: 1/200-1/1000 ELISA: 1/10000
Reactivity:	Human, Mouse, Rat
Host:	Rabbit
Isotype:	IgG
Clonality:	Polyclonal
Immunogen:	The antiserum was produced against synthesized peptide derived from human Connexin 43. AA range:333-382
Formulation:	Liquid in PBS containing 50% glycerol, 0.5% BSA and 0.02% sodium azide, pH 7.3.
Concentration:	lot specific
Purification:	Affinity Purified
Conjugation:	Unconjugated
Storage:	Store at 4°C short term. Aliquot and store at -20°C long term. Avoid freeze/thaw cycles.
Stability:	1 year
Predicted Protein Size:	Observed MW (kDa):43
Gene Name:	gap junction protein alpha 1
Database Link:	Entrez Gene 2697 Human P17302
Background:	Swiss-Prot Acc.P17302.
Synonyms:	Connexin-43; CX43; DFNB38; GJAL; HSS; ODD; ODDD; ODOD; SDTY3



[View online »](#)

Product images:



Western blot analysis of Connexin 43 in various lysates using Connexin 43 antibody.